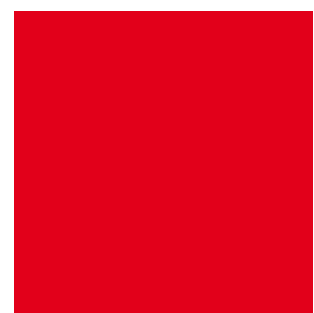
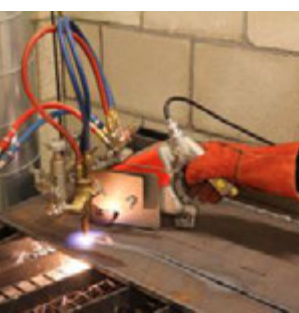
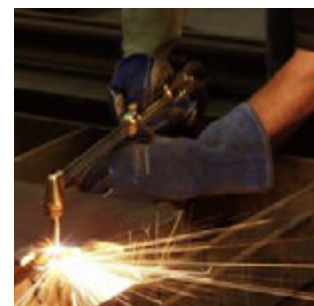
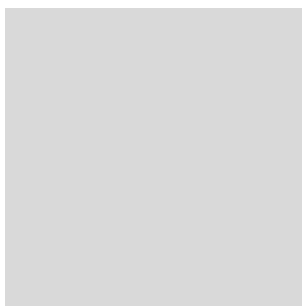
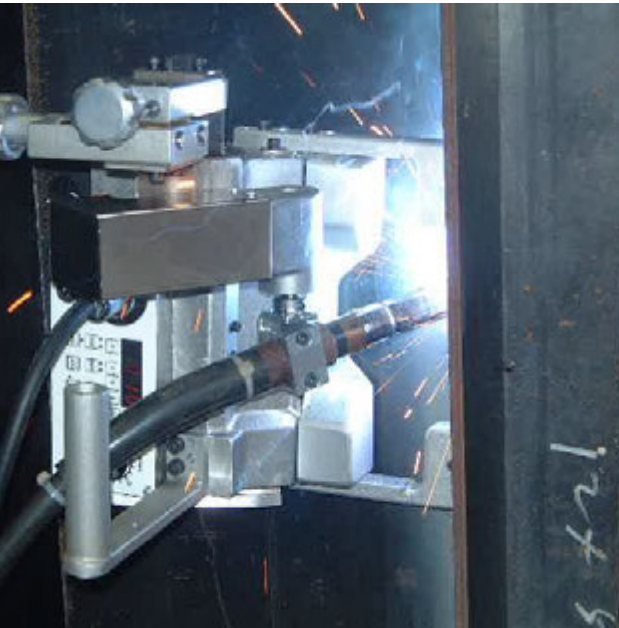
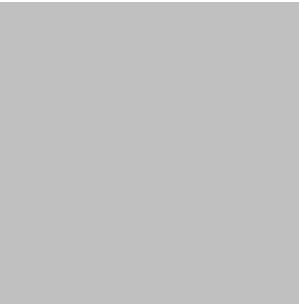


Portable Machines and Gas Equipment Product Catalogue





KOIKE – the spirit of cutting.

Established in 1918 in Japan,
customers active in shipbuilding, steel construction, vehicle manufacturing, fabrication
and other heavy metal industries trust on nearly 100 years of KOIKE's cutting expertise.

Advanced technology combined with face to face relationship and an in-depth
understanding of customers cutting needs - that's what KOIKE as a Japanese manufacturer
of oxy-fuel, plasma and laser cutting technology stands for.

Table of Contents

Portable Cutting Machine

Handy Auto / Handy Auto Plus	4
IK-12 Beetle	6
IK-93T Hawk	8
IK-93T Edge-Cut	10
IK-12 Max3	12
IK-72T	18
Picle-1-II	22
Auto Picle - S	24
Auto Picle Plasma	26
KHC-600D	28
Mini-Mantis II	30
IK-82 Series	32
Cir-Cut II	34
IK-70 Model 1000	36

Portable CNC Cutting Machine

PNC-12 Extreme	38
----------------------	----

Portable Welding Machine

WEL-HANDY MINI STRONG	44
WEL-HANDY MULTI II Series	48
IK-2W Series	54

Gas Equipment

Apollo Global Coupling	58
Hand Torches	62
Cutting Nozzles	66
Oxy-fuel Cutting Accessories	72



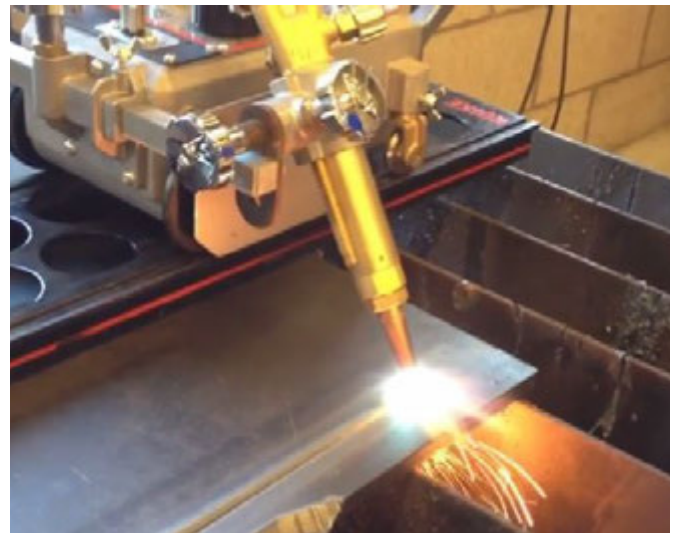
IK-12 BEETLE

Portable Oxy-fuel Cutting Machine

Features and Benefits

- **Multiple use oxy-fuel machine**
Performs high quality straight, circle and bevel cuts. Single model includes 1 torch and 3 cutting nozzles
- **Single Cone Stepless Drive System**
Maintains constant travel speed even with high temperatures providing stable, trouble-free cutting
- **Lightweight Aluminium body**
At only 9.5 kg, easy to carry and use yet rugged enough to be a true workhorse
- **Simple operation**
All functions are controlled by forward / off / reverse switch, clutch lever and speed adjustment knob.
- **Extendable 1800 mm straight rail**
Cut longer parts

The **IK-12 Beetle** is an affordable, portable, oxy-fuel cutting machine. It is known around the world as one of the best portable cutting machines in the industry.

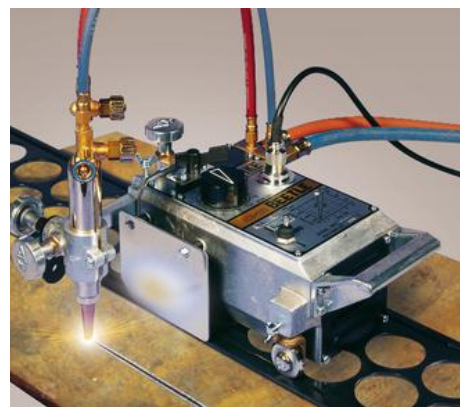


High quality cuts with simple operation

Single Cone Stepless Drive System

The Single Cone Stepless Drive System equipped on **IK-12 Beetle** guarantees a constant and stable movement of the machine, providing a sharp, clean cuts.

The travel functions (forwards, backwards, stop) are activated only by one operation element. The clutch control assures a trouble-free positioning of the machine. Bevel cutting is achieved by simply adjusting the torch holder at the bottom edge of the plate. A gear rack / bevel drive ensures a precise positioning of the machine torch (Y - and Z-axis).



Accessories

Optional accessories

Accessory	Stock #	Description
IK-12 Standard rail 1800 mm	30400	Extendable straight rail
Circle cutting attachment (Beetle)	31858	Cutting diameter: Ø 50 - 2400 mm
Transformer AC230V - 42V	222.002.207	For 42V models
Transformer AC230V - 110V	90100	For 110V models



Circle cutting attachment

Type and Specification

Specification

	IK-12 Beetle
Cutting thickness	5 – 50 mm
Cutting speed	150 - 800 mm/min
Bevel angle	0 - 45°
Drive system	Single Cone Stepless Drive System
Motor	Condenser-induction
Input power	AC 220V / 110V / 42V
Dimension	L350 x W175 x H140 mm
Weight	9.5 kg

Types

Model	Stock #
IK-12 Beetle 220V	TBCA31005
IK-12 Beetle 42V	90022
IK-12 Beetle 110V	90021

Scope of delivery

Scope of delivery
Machine body with torch set
Cutting nozzles (102HC or 106HC, size #0, 1, 2)
Power cable
Standard tool set
Operation manual



Your cutting needs - achieved.



Artin Bonyan Co.

No.2, Jolfa Str, Tehran, Iran (IR)
Phone: + 98 21 22891307
Fax: + 98 21 22891297
Web: www.artinbonyan.com
E-mail: info@artinbonyan.com

Koike Europe B.V.

Grote Tocht 19
1507 CG Zaandam
The Netherlands

Tel +31-(0)75 - 612 - 7227
Fax +31-(0)75 - 670 - 2271
info@koike-europe.com
www.koike-europe.com