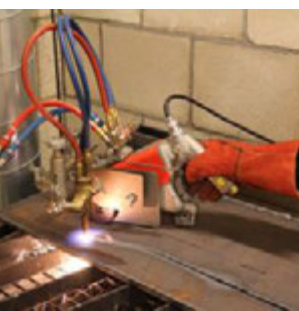
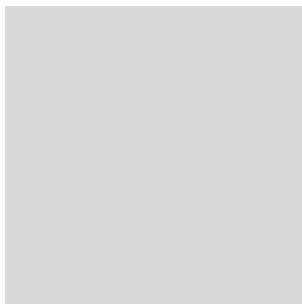
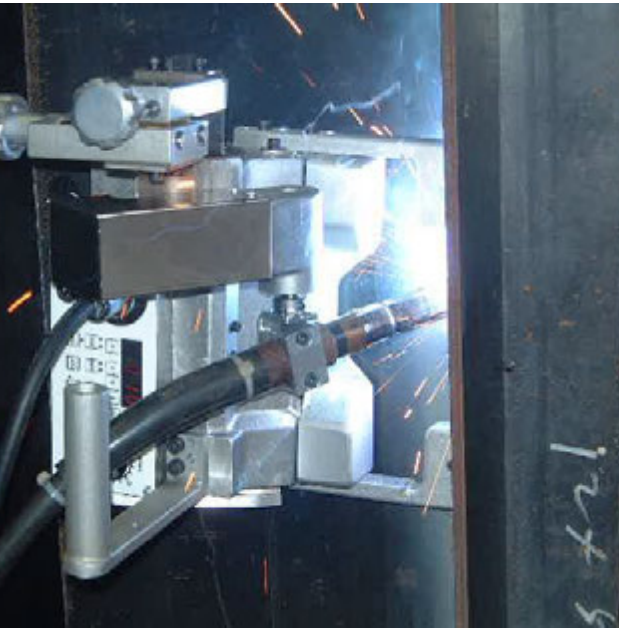
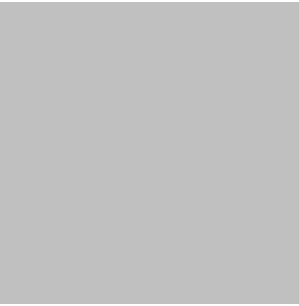


Portable Machines and Gas Equipment Product Catalogue





KOIKE – the spirit of cutting.

Established in 1918 in Japan,
customers active in shipbuilding, steel construction, vehicle manufacturing, fabrication
and other heavy metal industries trust on nearly 100 years of KOIKE's cutting expertise.

Advanced technology combined with face to face relationship and an in-depth
understanding of customers cutting needs - that's what KOIKE as a Japanese manufacturer
of oxy-fuel, plasma and laser cutting technology stands for.

Table of Contents

Portable Cutting Machine

Handy Auto / Handy Auto Plus	4
IK-12 Beetle	6
IK-93T Hawk	8
IK-93T Edge-Cut	10
IK-12 Max3	12
IK-72T	18
Picle-1-II	22
Auto Picle - S	24
Auto Picle Plasma	26
KHC-600D	28
Mini-Mantis II	30
IK-82 Series	32
Cir-Cut II	34
IK-70 Model 1000	36

Portable CNC Cutting Machine

PNC-12 Extreme	38
----------------------	----

Portable Welding Machine

WEL-HANDY MINI STRONG	44
WEL-HANDY MULTI II Series	48
IK-2W Series	54

Gas Equipment

Apollo Global Coupling	58
Hand Torches	62
Cutting Nozzles	66
Oxy-fuel Cutting Accessories	72



Hand Torch

Heavy Duty Gas Cutting Torches

Features and Benefits

- **Tip mixing system**
- **Precisely balanced**
- **Heavy ribbed round handle**
- **Internal tip nut**
- **Easy grip gas valves**

Each cutting torch is built to the highest standards, then stringently tested to insure safe; long life operation. Designed for the professional for use in industries such as metal fabrication, shipyards, salvage, construction and other general purpose uses.



Ergonomics

Precisely balanced, long lasting hand torches

- **Tip mixing system**
The triple-seat nozzle mixing system assures greater safety and reduces the risk of flashback and backfire
- **Precisely balanced**
Each torch is designed to provide ease of use in any application.
- **Heavy ribbed round handle**
Provides good ventilation and a sure handed grip on the torch
- **Internal tip nut**
Protects threads in torch head
- **Easy grip gas valves**
Allows gloved hands to quickly and accurately set preheat flame



SILVER-CUT Series

- **Lightweight and compact**, well balanced heavy duty hand cutting torch
- **Chrome plated**
- **Triangular tube configuration** for greater strengths

SILVER-CUT K250



SILVER-CUT K250

Torch lengths	495 mm
Weight	1.0 kg
Cutting capacity	Max. 250 mm
Torch head angle	90°
Fuel gas type	Any medium pressure fuel gas

Types	Connection	Stock #
SILVER-CUT K250	G3/8 RH-LH	80496
SILVER-CUT K250 9/16	9/16" RH-LH	80495



MK Series

- **Expertly crafted in Japan**
- **Robust**, Heavy duty hand cutting torch
- **Three stainless steel tubes** provides strengths and durability while keeping gases separated to mix safe in the cutting nozzle.
- Cutting oxygen **lever with lock function**. (excl. MK-36)
- **Die forged head**, increased strengths and service life

MK-150



MK-150	
Torch lengths	466 mm
Weight	0.9 kg
Cutting capacity	Max. 150 mm
Torch head angle	90°
Torch connection	G3/8 RH-LH
Fuel gas type	Any medium pressure fuel gas
Types	Stock #
MK-150	80497

MK-250



MK-250			
Torch lengths	525 mm (standard, 90° head)		
Weight	1.5 kg		
Cutting capacity	Max. 250 mm		
Fuel gas type	Any medium pressure fuel gas		
Types	Angle	Connection (RH, LH)	Stock #
MK-250-75D	75°	G1/4, G3/8	80503
MK-250-90D	90°	G3/8, G3/8	80504
MK-250-180D	180°	G3/8, G3/8	DA222815

MK-300



MK-300		
Torch lengths	661 mm (standard, 90° head)	
Weight	1.55 kg	
Cutting capacity	Max. 300 mm	
Torch head angle	75° and 90°	
Torch connection	G1/4RH, G3/8LH	
Fuel gas type	Any medium pressure fuel gas	
Types	Torch angle	Stock #
MK-300-75D	75°	80507
MK-300-90D	90°	80508

MK-36



MK-36	
Torch lengths	915mm
Weight	1.5 kg
Cutting capacity	Max. 200 mm
Torch head angle	75° and 90°
Torch connection	G3/8 RH-LH
Fuel gas type	Any medium pressure fuel gas

Types	Torch angle	Stock #
MK-36 75D	75°	DA212825
MK-36 90D	90°	-

Hand Torch Accessory

■ Dual roller guide

Enables stable cutting. Equipped with two smooth rollers and a tip holder.



	Stock #
Dual roller guide	80515

■ Circle bar with center pin

Attachment to Dual Roller Guide, enabling circle cutting using hand torch. Cutting diameter adjustable upto Ø 550mm



	Stock #
Circle bar with center pin	80516



Koike Europe B.V.

Grote Tocht 19
1507 CG Zaandam
The Netherlands

Tel +31-(0)75 - 612 - 7227
Fax +31-(0)75 - 670 - 2271
info@koike-europe.com
www.koike-europe.com



Artin Bonyan Co.

No.2, Jolfa Str, Tehran, Iran (IR)
Phone: + 98 21 22891307
Fax: + 98 21 22891297
Web: www.artinbonyan.com
E-mail: info@artinbonyan.com