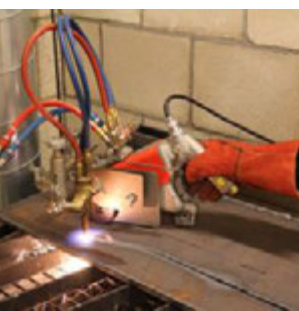
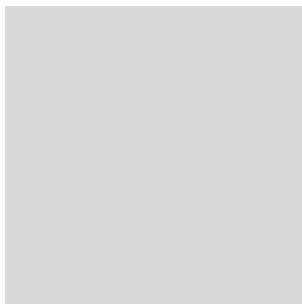
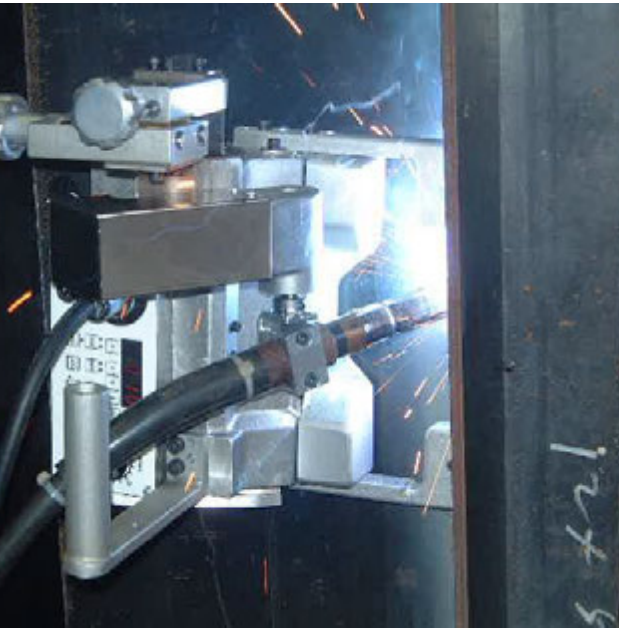
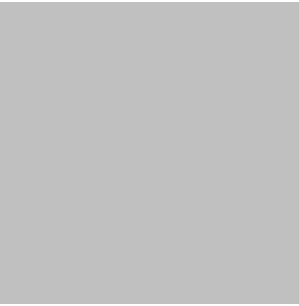


Portable Machines and Gas Equipment Product Catalogue





KOIKE – the spirit of cutting.

Established in 1918 in Japan,
customers active in shipbuilding, steel construction, vehicle manufacturing, fabrication
and other heavy metal industries trust on nearly 100 years of KOIKE's cutting expertise.

Advanced technology combined with face to face relationship and an in-depth
understanding of customers cutting needs - that's what KOIKE as a Japanese manufacturer
of oxy-fuel, plasma and laser cutting technology stands for.

Table of Contents

Portable Cutting Machine

Handy Auto / Handy Auto Plus	4
IK-12 Beetle	6
IK-93T Hawk	8
IK-93T Edge-Cut	10
IK-12 Max3	12
IK-72T	18
Picle-1-II	22
Auto Picle - S	24
Auto Picle Plasma	26
KHC-600D	28
Mini-Mantis II	30
IK-82 Series	32
Cir-Cut II	34
IK-70 Model 1000	36

Portable CNC Cutting Machine

PNC-12 Extreme	38
----------------------	----

Portable Welding Machine

WEL-HANDY MINI STRONG	44
WEL-HANDY MULTI II Series	48
IK-2W Series	54

Gas Equipment

Apollo Global Coupling	58
Hand Torches	62
Cutting Nozzles	66
Oxy-fuel Cutting Accessories	72



Apollo Global Coupling

Quick-release coupling series

Features and Benefits

- Increase productivity
- High quality
- Easy to use
- Contributes in work-site safety
- Automatic gas supply shutoff
- Double seal packing
- Miss-connection proof
- Designed according to ISO 7289

The **Apollo Global coupling** have been designed to provide quick set up and removal of cutting and welding equipment.

Precisely machined single push system easily connects matching couplings with a click. Safety lock function assures secure connection and prevents unintended disconnection during use.

KOIKE Apollo Global couplings fulfill ISO 7289.



High quality design

- **Brightly colored**

For safety, each coupling socket has lock key made of brightly colored resin. Unlike sticker or paint, color stays on for long time, contributing in safety.

- **Safety lock mechanism**

Each socket is equipped with Safety Lock function, which secures the connection and prevents accidental disconnection.

- **Automatic gas supply shutoff**

Allows flow of supply gas only when couplings are connected. Gas supply is automatically shutoff when couplings are disconnected.

- **Double seal packing**

Two unique seal packings provided between plug and socket assures tight sealing.

- **Chrome plated**

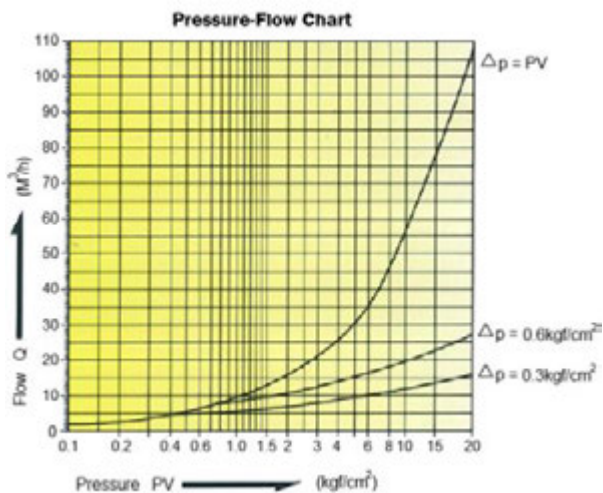
Durable chrome plating finish provide corrosion resistance and ensures smooth coupling to last.

- **Quality**

Designed according to ISO7289 and produced in Japan under excellent quality management.



Technical specification



- **Maximum working pressure**

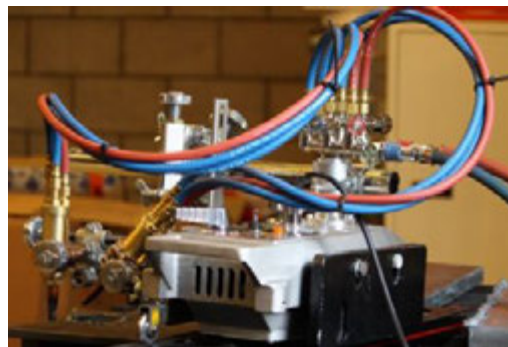
Oxygen	9.8 bar
Fuel gas	2.0 bar
Inert gas (Welding gas)	9.8 bar

- **Check valve working pressure (Z-type coupling only)**

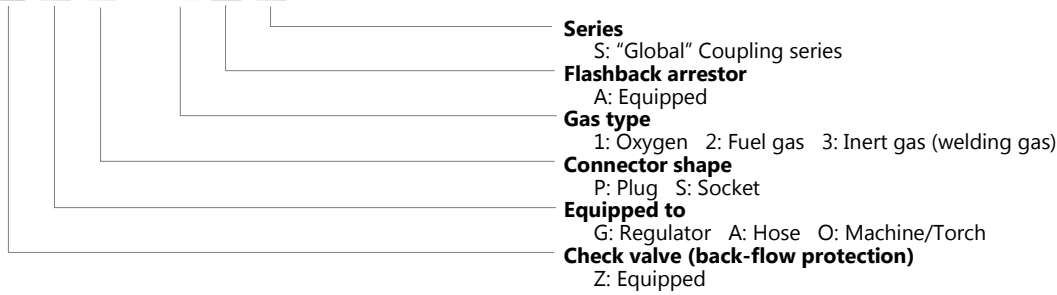
Activation at	0.015 bar
---------------	-----------

- **Durability**

Endurance test (by UL) : 30,000 cycles



Sample: **Z O P - 1 A S**



Model: **GS**

Regulator mount



Model	Connection	Type of gas	Installation	Stock #
GS-1S	G1/4 RH	Oxygen	Regulator	CG2311
	G3/8 RH	Oxygen	Regulator	CG2321
	M16 x 1.5 RH	Oxygen	Regulator	CG2821
	BSPF 3/8" RH	Oxygen	Regulator	CG2621
	US 9/16"-18 UNF RH	Oxygen	Regulator	CG2021
GS-2S	G1/4 LH	Fuel gas	Regulator	CG2333
	G3/8 LH	Fuel gas	Regulator	CG2331
	M16 x 1.5 LH	Fuel gas	Regulator	CG2841
	BSPF 3/8" LH	Fuel gas	Regulator	CG2641
	US 9/16"-18 UNF LH	Fuel gas	Regulator	CG2041
GS-3S	G1/4 RH	Inert gas (Welding gas)	Regulator	CG3031
	G3/8 RH	Inert gas (Welding gas)	Regulator	CG3321
	M16 x 1.5 RH	Inert gas (Welding gas)	Regulator	CG3821
	BSPF 3/8" RH	Inert gas (Welding gas)	Regulator	CG3621
	US 9/16"-18 UNF RH	Inert gas (Welding gas)	Regulator	CG3021

Model: **AP / ZAP**

Hose mount, regulator side



Model	Max. hose diameter	Type of gas	Installation	Stock #
AP-1S	6.0 mm	Oxygen	Hose	CG2500
	8.2 mm	Oxygen	Hose	CG2414
	9.2 mm	Oxygen	Hose	CG2424
AP-2S	6.0 mm	Fuel gas	Hose	CG2501
	8.2 mm	Fuel gas	Hose	CG2474
	9.2 mm	Fuel gas	Hose	CG2502
	11 mm	Fuel gas	Hose	CG2434
AP-3S	6.0 mm	Inert gas (Welding gas)	Hose	CG3432
	8.2 mm	Inert gas (Welding gas)	Hose	CG3414
	9.2 mm	Inert gas (Welding gas)	Hose	CG3424
ZAP-1S	6.0 mm	Oxygen	Hose	CG2924
	7.0 mm	Oxygen	Hose	CG2926
	8.2 mm	Oxygen	Hose	CG2312
	9.2 mm	Oxygen	Hose	CG2322
	11 mm	Oxygen	Hose	CG2922
ZAP-2S	6.0 mm	Fuel gas	Hose	CG2944
	7.0 mm	Fuel gas	Hose	CG2946
	8.2 mm	Fuel gas	Hose	CG2334
	9.2 mm	Fuel gas	Hose	CG2942
	11 mm	Fuel gas	Hose	CG2332
ZAP-3S	6.0 mm	Inert gas (Welding gas)	Hose	CG3924
	8.2 mm	Inert gas (Welding gas)	Hose	CG3312
	9.2 mm	Inert gas (Welding gas)	Hose	CG3322



Model: AS

Hose mount, machine / torch side



Model	Max. hose diameter	Type of gas	Installation	Stock #
AS-1S	6.0 mm	Oxygen	Hose	CG2963
	7.0 mm	Oxygen	Hose	CG2967
	8.2 mm	Oxygen	Hose	CG2341
	9.2 mm	Oxygen	Hose	CG2351
	11 mm	Oxygen	Hose	CG2961
AS-2S	6.0 mm	Fuel gas	Hose	CG2983
	7.0 mm	Fuel gas	Hose	CG2987
	8.2 mm	Fuel gas	Hose	CG2363
	9.2 mm	Fuel gas	Hose	CG2981
	11 mm	Fuel gas	Hose	CG2361
AS-3S	6.0 mm	Inert gas (Welding gas)	Hose	CG3132
	8.2 mm	Inert gas (Welding gas)	Hose	CG3341
	9.2 mm	Inert gas (Welding gas)	Hose	CG3351

Model: ZOP

Machine / torch mount



Model	Connection	Type of gas	Installation	Stock #
ZOP-1S	G1/4 RH	Oxygen	Machine / Torch	CG2342
	G3/8 RH	Oxygen	Machine / Torch	CG2352
	M16 x 1.5 RH	Oxygen	Machine / Torch	CG2862
	BSPF 3/8" RH	Oxygen	Machine / Torch	CG2662
	US 9/16"-18 UNF RH	Oxygen	Machine / Torch	CG2062
ZOP-2S	G1/4 LH	Fuel gas	Machine / Torch	CG2364
	G3/8 LH	Fuel gas	Machine / Torch	CG2362
	M16 x 1.5 LH	Fuel gas	Machine / Torch	CG2882
	BSPF 3/8" LH	Fuel gas	Machine / Torch	CG2682
	US 9/16"-18 UNF LH	Fuel gas	Machine / Torch	CG2082
ZOP-3S	G1/4 RH	Inert gas (Welding gas)	Machine / Torch	CG3342
	G3/8 RH	Inert gas (Welding gas)	Machine / Torch	CG3352
	BSPF 3/8" RH	Inert gas (Welding gas)	Machine / Torch	CG3662
	US 9/16"-18 UNF RH	Inert gas (Welding gas)	Machine / Torch	CG3062
ZOP-1S	G1/4 RH	Oxygen	Machine / Torch	CG2372
	G3/8 RH	Oxygen	Machine / Torch	CG2472
	M16 x 1.5 RH	Oxygen	Machine / Torch	-
ZOP-2S	G3/8 LH	Fuel gas	Machine / Torch	CG2392
	M16 x 1.5 LH	Fuel gas	Machine / Torch	-



Your cutting needs - achieved.

Koike Europe B.V.

Grote Tocht 19
1507 CG Zaandam
The Netherlands

Tel +31-(0)75 - 612 - 7227
Fax +31-(0)75 - 670 - 2271
info@koike-europe.com
www.koike-europe.com



Artin Bonyan Co.

No.2, Jolfa Str, Tehran, Iran (IR)
Phone: + 98 21 22891307
Fax: + 98 21 22891297
Web: www.artinbonyan.com
E-mail: info@artinbonyan.com