

THE ANGLEMASTER-HD

ANGLE/FLAT LINE



AFCPS-863

B I G G E R • F A S T E R • S T R O N G E R



Peddinghaus





Dear Industry Partner,

Welcome to the World of Peddinghaus - The World of "BETTER".

In the world of Peddinghaus we aim to be better. Take a look at any of our 5,000+ installations throughout the globe. These fabricators experience reduced costs and higher production using our equipment. Why? Because with Peddinghaus they receive better technology, better service, and better quality than anyone else can provide. These things aren't easy to do, and not every company can guarantee what Peddinghaus does. I am proud that I can say these things because at Peddinghaus we work harder than anyone to give our customers the best. Whether they are located in New York, Los Angeles, or Chicago; they all receive the very same service, spare parts, and support that is second to none.

Welcome to Partnerships - From Software to Service to Sales.

At Peddinghaus we maintain strong partnerships with industry leaders to ensure your success. Whether this is our relationship with leading software providers (such as Shop Data Systems, Sigmanest, Steel Office, AceCad, Tekla, FabTrol, Design Data, and more) or our partnership with regional sales and support organizations - our goal is to work together to serve you better.

Welcome to the Anglemaster-HD - More than Just a Machine.

Detail components make up the smallest tonnage of any fabricators' workload, but consistently demand the highest amount of labor. Peddinghaus pioneered the concept of the Anglemaster in response to discussions with fabricators looking to reduce labor costs within this realm. The Anglemaster-HD continues to set the tone for structural technology, and is unquestionably the most advanced angle line on the market today. This machine processes both the heaviest and lightest angle or flat bar sections 50% faster than previous models of angle lines. How does it do this? New technology! This machine is intelligent! It knows all dimensions of the material loaded and adjusts punching and shearing operations accordingly to increase production. Take a moment to learn how Smart Cylinder technology from Peddinghaus is changing the way the world views angle lines.

I have to admit, it's amazing how advanced the simple act of punching and shearing has become since Peddinghaus introduced the first Anglemaster over 30 years ago. One thing that hasn't changed in those 30+ years, is the build quality of the machine itself. One look at this machine, and you know it's a Peddinghaus. This new generation of Peddinghaus machinery combines cutting edge technology, with the time tested standards of craftsmanship Peddinghaus customers have come to expect.

Welcome to Peddinghaus Service - Unmatched Global Support.

At Peddinghaus service is priority number 1. Peddinghaus' global team of customer support representatives are on duty, on call, all the time at our very own 24 hour customer support center. Combined with state-of-the-art remote diagnostic software, readily available local field support professionals, and the industry leading warranty - customer support from Peddinghaus is only a call or a click away.

Welcome to Peddinghaus - A Tradition of Innovation, a Reputation for Excellence.

My great-grandfather and grandfather perfected Ironworkers during their time with Peddinghaus; then it was my father's turn to pioneer the TDK drill line. In today's world I am proud that we at Peddinghaus continue to offer new solutions for our customers such as the Anglemaster-HD. This is only possible through constant innovation, and continuing investment in research and development. I invite you to see why Peddinghaus technology is the chosen provider for steel fabricators the world over.

Carl "Anton" Peddinghaus
Chief Executive Officer - Peddinghaus Corporation



IDEAL FOR THE PRODUCTION OF:

- Transmission Tower Manufacturers
- Agricultural Equipment Manufacturers
- Conveyor Manufacturers
- Structural Steel Fabricators
- Heavy Equipment Manufacturers
- Steel Service Centers
- Stadium Seating Manufacturers
- Barge and Ship Building Manufacturers
- Overhead Door Frame Manufacturers
- Aggregate Handling Manufacturers
- Lattice Tower Manufacturers
- Steel Stocking Centers
- And Many More...

ANGLEMASTER-HD



ANGLE



FLAT



CHANNEL

Punching | Shearing | Stamping | Carbide Scribing

Technical Specifications

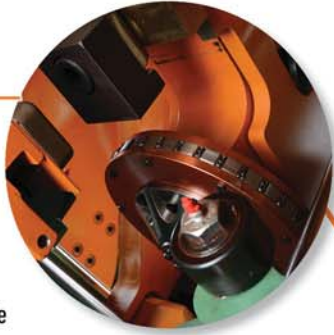
Maximum Angle Size	8" × 8" × 1"
Minimum Angle Size	1-1/2" × 1-1/2" × 3/16"
Maximum Flat Bar Size	12" × 1"
Minimum (Narrowest) Flat Bar Size	2" × 1/4"
Minimum (Thinnest) Flat Bar Size	3" × 3/16"
Maximum Shear Tonnage (3 Speed)	515 Tons
Maximum Punch Tonnage (3 Speed)	169 Tons
Maximum Punch Diameter	1-1/4" *

*Note: Maximum punch diameter of 1-1/2" requires the use of the optional 282 Coupling Nuts.

A SMARTER, FASTER, STRONGER SOLUTION

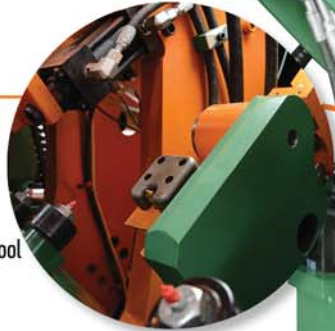
SIGNOMAT PART STAMPING

- 36 station (number / letter) part marking press
- Marks at a rate of 1 character per second
- Capable of being stationed for marking on near or far leg of angle



SIGNOSCRIPT CARBIDE SCRIBING

- Versatile carbide marking station allows for marking of any shape, number, or character
- Mark at multiple depths or sizes without tool change



TRIPLE TOOL PUNCH PRESS

- 169 ton three speed punch cylinder
- Smart Cylinder technology
- Punch up to 3 different tool shapes or sizes per leg of angle in a single pass through the machine





MINIMUM QUANTITY LUBRICATION SYSTEM

- Optional lubrication system for punches and shear
- Eco-friendly vegetable oil based lubrication dramatically extends shear and punch life



SIEMENS TOUCH SCREEN CONTROL

- 19" touch screen control panel
- Powerful enough for today's 3D CAD/CAM packages

PC WORKSTATION

- Allows for streamlined access to e-mail, modeling systems, server, and other critical programs

**Personal Computer Not Included*



SINGLE CUT SHEAR

- 515 ton three speed shear cylinder
- Smart Cylinder technology
- Single cut shear tooling eliminates the creation of shear slugs commonly experienced with double cut shear tooling



ROLLER MEASUREMENT

- Peddinghaus Roller Measurement
- Continuous feed with no stop in production
- Capable of 200 FPM x-axis material positioning speeds

FROM BASE PLATES TO CLIP ANGLES THE ANGLEMASTER-HD DOES IT ALL

The Anglemaster-HD is designed to not only be fast, but versatile. Capable of punching and shearing flat bar up to 12" x 1", and angle up to 8" x 8" x 1", typical structural detail sections are processed with ease. The Anglemaster-HD is also capable of punching (not shearing) channel sections up to 12" wide adding further versatility to the capabilities of the machine.

COMPREHENSIVE MATERIAL DIMENSIONING FOR FASTER PRODUCTION

The Anglemaster-HD utilizes comprehensive material dimensioning to not only increase production, but also create a user friendly atmosphere. By utilizing an array of dimensioning feedback, the Anglemaster-HD can identify the length of stock, thickness of material, and leg lengths (or flat bar width). Once the machine understands all dimensions of material, it optimizes punch and shear motion to increase production efficiency. If stock loaded does not match that of the selected program, the machine will notify the operator and provide the option to continue the program, or locate the appropriate stock type.

A SMARTER ANGLEMASTER SMART CYLINDER TECHNOLOGY

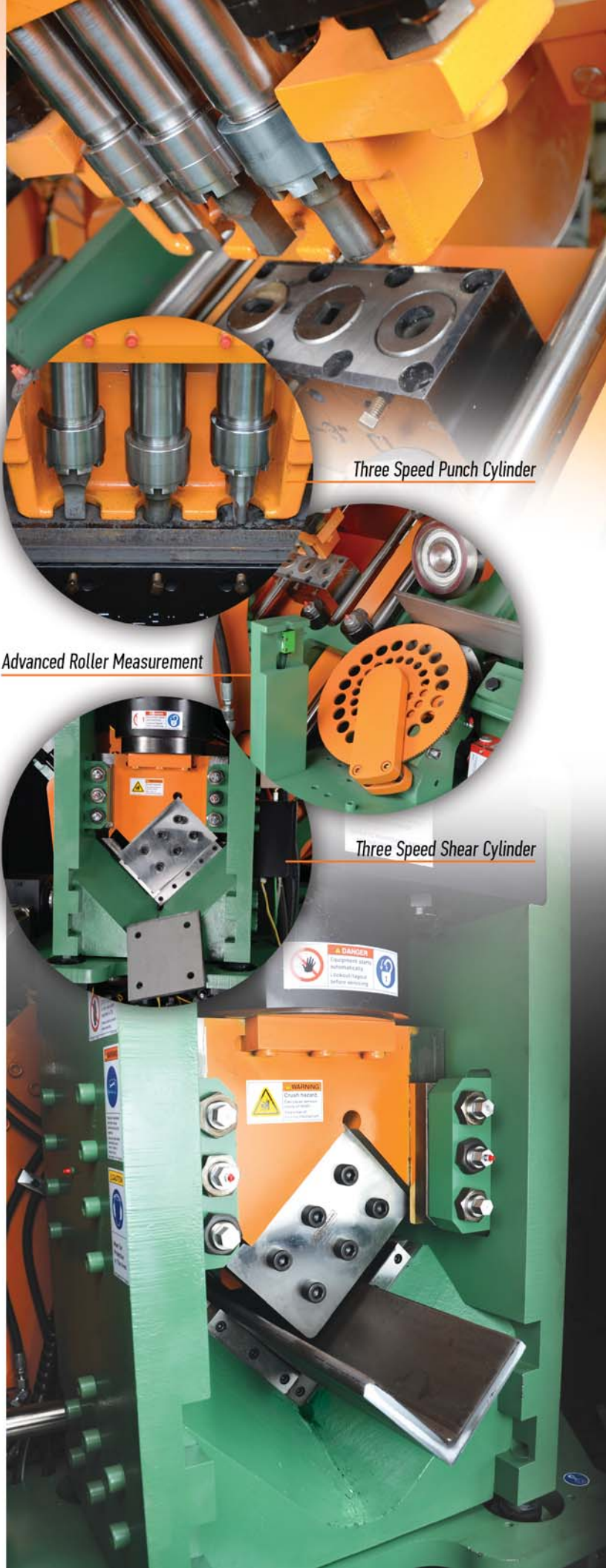
Using the information gathered by the material dimensioning system, the Anglemaster-HD understands the thickness of material loaded, and employs this information to automatically adjust the three speed punch and shear cylinders. By adjusting the amount of power needed per section size, the machine can take full advantage of lower tonnage / high speed operations when thinner material is being processed. When thicker material is loaded, the machine will maximize tonnages in order to process these sections accordingly.

THE INDUSTRY STANDARD FOR ROLLER MEASUREMENT

Continuous production is the benefit that Roller Measurement offers fabricators. Process one piece after another with no need to reload a carriage or other feed mechanism. Accuracy is made paramount with the use of two precision roller disks at the entry, and exit of the machine.

CONFIGURABLE SIGNOMAT OR SIGNOSCRIPT MARKING OPTIONS

Part stamping and carbide scribing are both available marking options on the Anglemaster-HD. Using a fully configurable table design, marking systems can be placed in a variety of arrangements to suit the unique needs of each fabricator.



Three Speed Punch Cylinder

Advanced Roller Measurement

Three Speed Shear Cylinder

PEDDINGHAUS' RAPTOR CAD/CAM PLATFORM

Raptor software from Peddinghaus is today's premier structural machine tool CAD/CAM platform. Equipped with versatile modules intended to import, design, and export part programs, Raptor is fully customizable for the unique needs of the individual fabricator.

THE DSTV IMPORT MODULE

Raptor seamlessly integrates with popular Building Information Modeling (BIM) platforms capable of generating DSTV files using the DSTV Import Module. Commonly used BIM platforms include SDS/2 from Design Data, Tekla Structures, SteelOffice, Graitec and more.

THE TEKLA API IMPORT MODULE

The Tekla API Module allows for the direct importation of Tekla part files into Raptor Software, eliminating the need to convert into an intermediary file type.

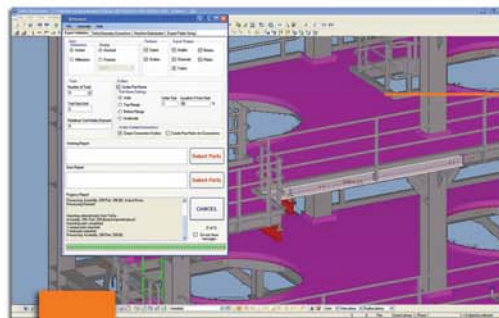
By referencing part data within a Tekla BIM model, Raptor's Tekla API Module is capable of automatically generating scribe marks, and weld locations based on the model's original geometry. Using Raptor's Tekla API, Peddinghaus bridges the gap between design intent and final fabrication.

THE 3D MODULE - MODIFY, INSPECT, CREATE

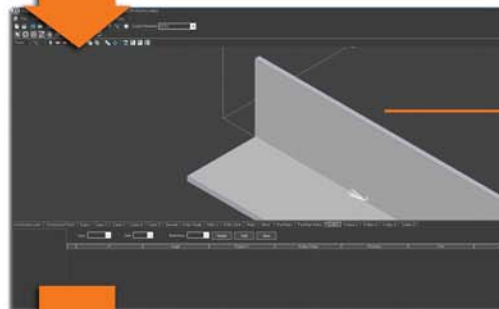
The core of Raptor is the 3D Module. If part data has been imported into Raptor, the 3D Module works as an inspection tool and is capable of modifying imported information. If part files need to be created, the intuitive design and user friendly interface of the 3D Module allows for powerful programming options.

THE PEDDIMAT LEGACY EXPORT MODULE

The Peddimat Legacy Export Module provides users the opportunity to create Peddimat files using Raptor. This export option allows users to develop part programs for operation on legacy machines that do not have a Raptor post processor, or do not have an active license of Raptor present at the control.



Design and Export



Program For Production



Process and Fabricate



RAPTOR SOFTWARE MODULES

IMPORT

TEKLA API MODULE

DSTV MODULE

MODIFY
INSPECT
CREATE

3D MODULE

EXPORT

RAPTOR POST PROCESSOR / PEDDIMAT EXPORT MODULE

ON CALL. ON DUTY. ALL THE TIME.

24 Hour Service and Support from Peddinghaus

24 HOUR CUSTOMER SERVICE

The Peddinghaus state-of-the-art Service Center continues to grow to serve you even better - and is available 24 hours a day!

- 60+ trained traveling field service technicians for on site assistance
- 20+ knowledgeable telephone technicians
- Complete training facility for operators and programmers

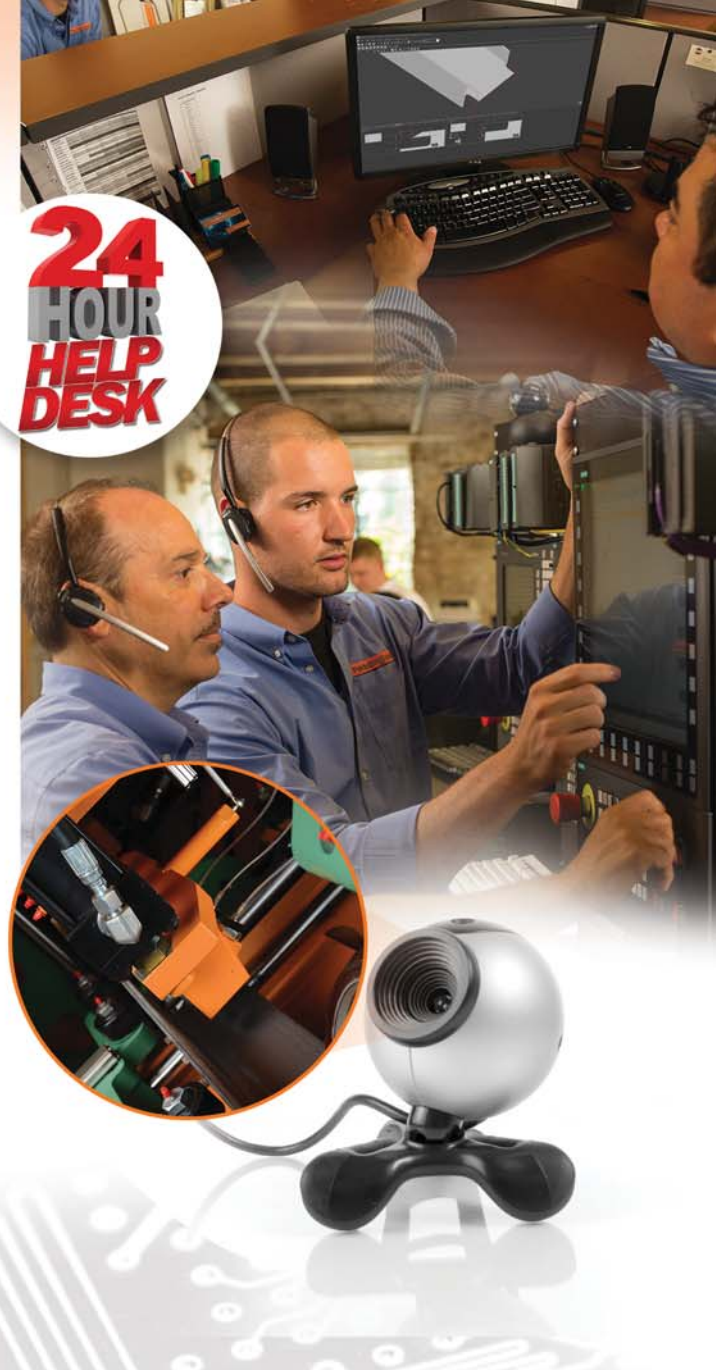
WEBCAM TROUBLESHOOTING

Each of Peddinghaus' machines are shipped with a simple to use WebCam and software. Peddinghaus technicians can view mechanical questions from anywhere in the globe using this latest in customer service technology.

MODERN REMOTE ASSISTANCE

Peddinghaus' 24 hour tech support center is equipped with modern remote assistance technology. This allows Peddinghaus technicians to remotely diagnose machine questions or issues from anywhere on the globe. With the flexibility of the powerful Siemens control, and modern remote internet software, Peddinghaus technicians can view the control screen of a machine in question with ease. Nearly 90% of service issues can be solved without the need for a service visit using this technology.

**24
HOUR
HELP
DESK**



Peddinghaus Corporation USA
300 N. Washington Ave.
Bradley, Illinois 60915 • USA
Tel: 815-937-3800
Fax: 815-937-4003
www.peddinghaus.com

Paul Ferd. Peddinghaus GmbH
Hasslinghauser Str. 156
58285 Gevelsberg
Germany
Tel: + 49 (0) 2332 72-0
Fax: + 49 (0) 2332 72-208

Peddinghaus Española, S.A.
Pol. Industrial Gojain s/n
01170 Legutiano
Alava, Spain
Tel: +34 945 465370
Fax: +34 945 465526

Peddinghaus

THE GLOBAL LEADER IN FABRICATION
QUALITY • INNOVATION • SERVICE

Peddinghaus Corporation UK Ltd
Unit 6 Queensway Link
Stafford Park 17
Telford
Shropshire
UK
Tel: +44 1952 200 377
Fax: +44 1952 292 877


Artin Bonyan Co.
No.2, Jolfa Str, Tehran, Iran (IR)
Phone: + 98 21 22876451
Fax: + 98 21 22891297
Web: www.artinbonyan.biz
E-mail: info@artinbonyan.biz

SEE THE ANGLEMASTER-HD
ONLINE HERE!!!



Download a QR Code Scanner App
for your smartphone and experience
Peddinghaus in the palm of your hand!!!

SEZ • 863 • 01.20.16

