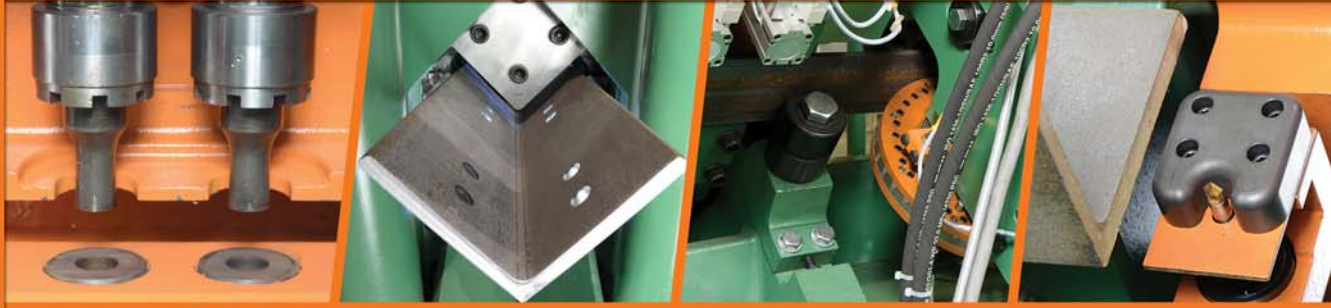




AFPS-643/Q

B I G G E R • F A S T E R • S T R O N G E R



Peddinghaus

THE **ANGLEMASTER** ANGLE/FLAT LINE



Dear Industry Partner,

Welcome to the World of Peddinghaus - The World of "BETTER".

In the world of Peddinghaus we aim to be better. Take a look at any of our 5,000+ installations throughout the globe. These fabricators experience reduced costs and higher production using our equipment. Why? Because with Peddinghaus they receive better technology, better service, and better quality than anyone else can provide. These things aren't easy to do, and not every company can guarantee what Peddinghaus does. I am proud that I can say these things because at Peddinghaus we work harder than anyone to give our customers the best. Whether they are located in New York, Los Angeles, or Chicago; they all receive the very same service, spare parts, and support that is second to none.

Welcome to Partnerships – From Software to Service to Sales.

At Peddinghaus we maintain strong partnerships with industry leaders to ensure your success. Whether this is our relationship with leading software providers (such as Shop Data Systems, Sigmanest, Steel Office, AceCad, Tekla, FabTrol, Design Data, and more) or our partnership with regional sales and support organizations - our goal is to work together to serve you better.

Welcome to the AFPS-643/Q – More than Just a Machine.

Detail components make up the smallest tonnage of any fabricators' workload, but consistently demand the highest amount of labor. Peddinghaus pioneered the concept of the Anglemaster in response to discussions with fabricators looking to reduce labor costs within this realm. Serving as the industry's benchmark for productivity, the AFPS-643/Q caters to today's fabricators need to automate punching, shearing, and marking for angle and flat bar.

What makes this machine unique compared to its predecessors? Features that include double punch tooling, single or double cut shearing, optional part stamping or carbide scribing, and advanced Roller Feed[®] measurement allow this machine to stand out from other options in today's marketplace. With a powerful super structure to match, the AFPS-643/Q is a machine truly built to stand the test of time in any shop environment.

Welcome to Peddinghaus Service – Unmatched Global Support.

At Peddinghaus service is priority number 1. Peddinghaus' global team of customer support representatives are on duty, on call, all the time at our very own 24 hour customer support center. Combined with state-of-the-art remote diagnostic software, readily available local field support professionals, and the industry leading warranty - customer support from Peddinghaus is only a call or a click away.

Welcome to Peddinghaus – A Tradition of Innovation, a Reputation for Excellence.

My great-grandfather and grandfather perfected Ironworkers during their time with Peddinghaus; then it was my father's turn to pioneer the TDK drill line. In today's world I am proud that we at Peddinghaus continue to offer new solutions for our customers such as the AFPS-643/Q. This is only possible through constant innovation, and continuing investment in research and development. I invite you to see why Peddinghaus technology is the chosen provider for steel fabricators the world over.

Carl "Anton" Peddinghaus
Chief Executive Officer - Peddinghaus Corporation



IDEAL FOR THE PRODUCTION OF:

- Transmission Tower Manufacturers
- Agricultural Equipment Manufacturers
- Conveyor Manufacturers
- Structural Steel Fabricators
- Heavy Equipment Manufacturers
- Steel Service Centers
- Stadium Seating Manufacturers
- Barge and Ship Building Manufacturers
- Overhead Door Frame Manufacturers
- Aggregate Handling Manufacturers
- Lattice Tower Manufacturers
- Steel Stocking Centers

3/8" R

AFPS-643/Q



ANGLE



FLAT

Punch | Shear | Stamp | Carbide Scribe

Technical Specifications

Maximum Angle Size	6" x 6" x 5/8"
Minimum Angle Size	1-1/2" x 1-1/2" x 1/8"
Maximum Flat Bar Size	6" x 5/8"
Minimum (Narrowest) Flat Bar Size	2" x 1/4"
Minimum (Thinnest) Flat Bar Size	3" x 3/16"
Single Cut Shear Tonnage	230 Tons
Punch Tonnage	75 Tons
Maximum Punch Diameter	1-1/4"
Optional Double Cut Shear Tonnage	100 Tons

THE BENCHMARK FOR ANGLE/FLAT BAR PRODUCTION

ROLLER MEASUREMENT

- Peddinghaus Roller Measurement
- Continuous feed with no stop in production



OPTIONAL SIGNOMAT PART STAMPING

- 36 station (number / letter) part marking press
- Marks at a rate of 1 character per second



OPTIONAL SIGNOSCRIP CARBIDE SCRIBING

- Versatile carbide marking station allows for marking of any shape, number, or character
- Mark at multiple depths or sizes without tool change





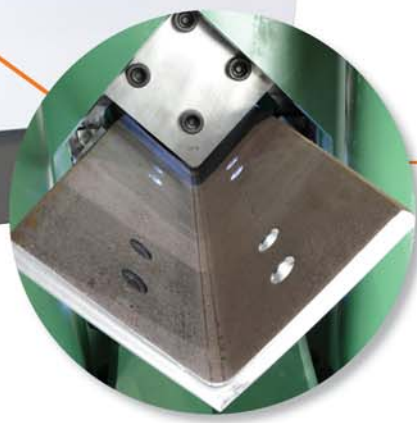
DOUBLE TOOL PUNCH PRESS

- 75 ton punch cylinder
- Two punch sizes per leg on 3" centers or 75 mm centers
- Punch up to two different tool shapes or sizes per leg of angle in a single pass through the machine with no tool change



SIEMENS PERFORMANCE ELECTRONICS

- Siemens 840Di Control
- Utilizes a Windows® PC interface



SINGLE OR DOUBLE CUT SHEAR

- 230 ton single cut shear
- Optional 100 ton double cut shear
- Shear angle or flat bar with ease

MULTIPLE PUNCH SIZES MINIMIZES TOOL CHANGE

The Peddinghaus AFPS-643/Q Anglemaster comes with two available punch sizes per leg on 3" centers. This feature eliminates tool change with parts containing up to 2 hole sizes per leg of angle. For parts programmed with multiple holes at 3" or 75 mm centers a single stroke of the punch press is all you need to create two holes at once.

POWERFUL SINGLE OR DOUBLE CUT SHEAR TOOLING

Whether you choose the cost savings of the powerful 230 ton single cut shear or the cleaner cutting with the available 100 ton double cut shear, processing angles up to 6" x 6" x 5/8" is no issue with the powerful AFPS-643/Q Anglemaster.

THE INDUSTRY STANDARD FOR ROLLER MEASUREMENT®

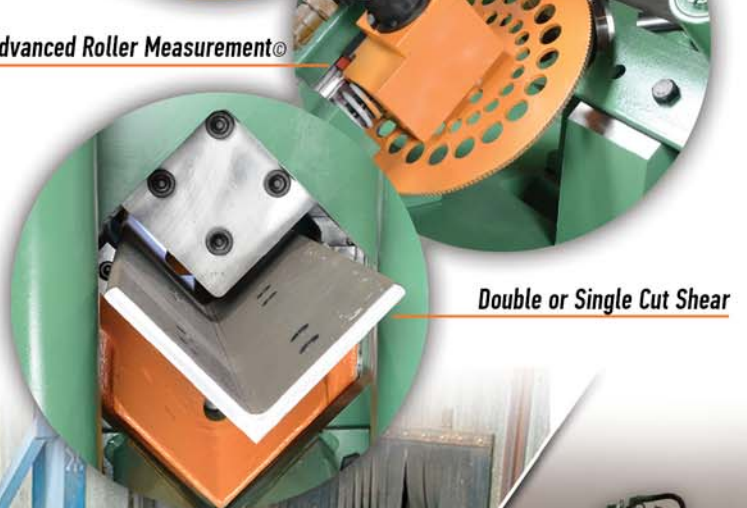
Continuous production is the benefit that Roller Measurement® offers fabricators. Process one piece after another with no need to reload a carriage or other feed mechanism. Accuracy is made paramount with the use of two precision roller disks at the entry, and exit of the machine.

OPTIONAL SIGNOMAT OR SIGNOSCRIPT MARKING

The Anglemaster AFPS-643/Q is available with either SignoScript carbide scribing capabilities or SignoMat hard stamping. SignoScript carbide part marking allows for a wide variety of shapes, sizes, depths and orientations while SignoMat creates high speed part marks at an unmatched 1 second per character.



Two Punches Per Leg



Advanced Roller Measurement®



Double or Single Cut Shear



Infeed

Outfeed

PEDDINGHAUS SOFTWARE: A COMMON, INTUITIVE PLATFORM

Peddinghaus Software allows for seamless integration across platforms. Each machine, whether it be an angle line, drill line, coper, or automatic marking system utilizes a common software interface. Peddinghaus users enjoy having employees trained to operate several machines within their shop for total work flow flexibility. Easily import common DSTV files and process on the AFPS-643/Q from Peddinghaus.

THE RAPTOR TEKLA IMPORT

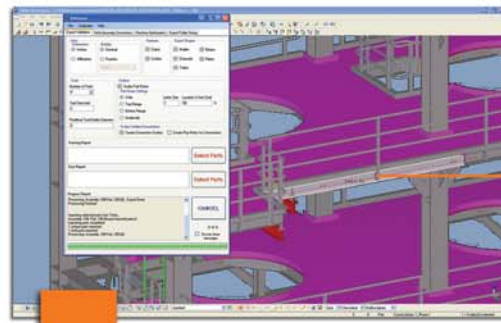
The Raptor Tekla import allows for seamless importation of Tekla part files into Peddinghaus Software, eliminating the need to convert into an intermediary file type. In addition to removing redundant file conversions Raptor utilizes additional data provided by the BIM model to seamlessly create scribe and connection data.

By referencing the parts within a Tekla BIM model, using Raptor Peddinghaus bridges the gap between design intent and final fabrication.

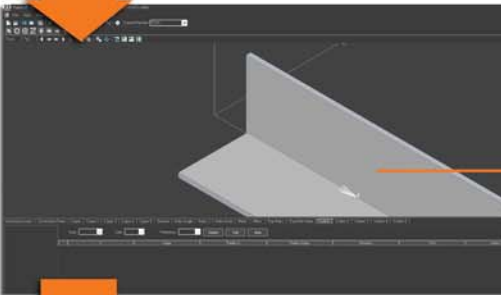
PEDDITRACK PRODUCTION TRACKING SOFTWARE

Peddinghaus offers every tool available to help you manage production, whether you are located at your plant, or across the world. PeddiTrack allows you to manage how many parts have been run, what programs were processed, and how long it took to process each part automatically.

Using modern internet tools PeddiTrack can create an online representation of your production. This allows you access critical manufacturing data from anywhere an internet connection is available.



Design and Export



Program For Production



Process and Fabricate



ON CALL. ON DUTY. ALL THE TIME.

24 Hour Service and Support from Peddinghaus

24 HOUR CUSTOMER SERVICE

The Peddinghaus state-of-the-art Service Center continues to grow to serve you even better - and is available 24 hours a day!

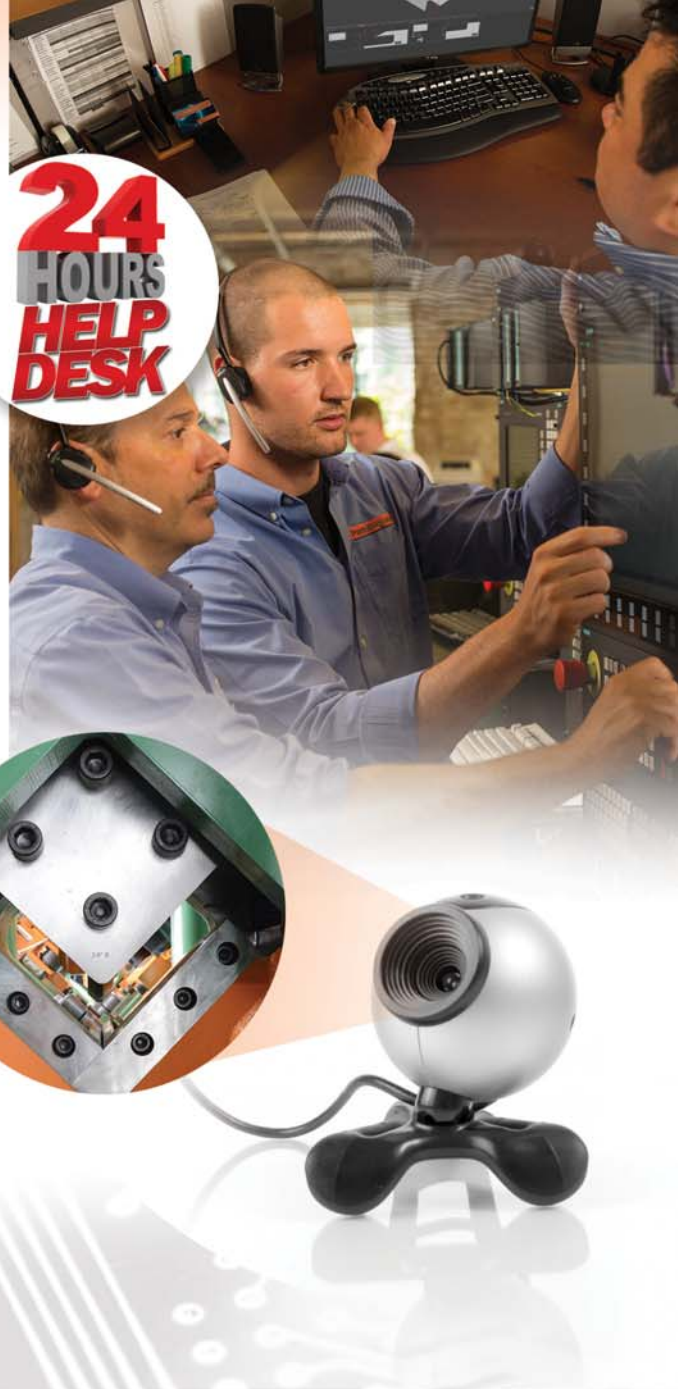
- 60+ trained traveling field service technicians for on site assistance
- 20+ knowledgeable telephone technicians
- Complete training facility for operators and programmers

WEBCAM TROUBLESHOOTING

Each of Peddinghaus' machines are shipped with a simple to use WebCam and software. Peddinghaus technicians can view mechanical questions from anywhere in the globe using this latest in customer service technology.

MODERN REMOTE ASSISTANCE

Peddinghaus' 24 hour tech support center is equipped with modern remote assistance technology. This allows Peddinghaus technicians to remotely diagnose machine questions or issues from anywhere on the globe. With the flexibility of the powerful Siemens control, and modern remote internet software, Peddinghaus technicians can view the control screen of a machine in question with ease. Nearly 90% of service issues can be solved without the need for a service visit using this technology.



**24
HOURS
HELP
DESK**

Peddinghaus Corporation USA
300 N. Washington Ave.
Bradley, Illinois 60915 • USA
Tel: 815-937-3800
Fax: 815-937-4003
www.peddinghaus.com

Paul Ferd. Peddinghaus GmbH
Hasslinghauser Str. 156
58285 Gevelsberg
Germany
Tel: + 49 (0) 2332 72-0
Fax: + 49 (0) 2332 72-208

Peddinghaus Española, S.A.
Pol. Industrial Gojain s/n
01170 Legutiano
Alava, Spain
Tel: +34 945 465370
Fax: +34 945 465526

Peddinghaus

THE GLOBAL LEADER IN FABRICATION
QUALITY • INNOVATION • SERVICE

Peddinghaus Corporation UK Ltd
Unit 6 Queensway Link
Stafford Park 17
Telford
Shropshire
UK
Tel: +44 1952 200 377
Fax: +44 1952 292 877



Artin Bonyan Co.
No.2, Jolfa Str, Tehran, Iran (IR)
Phone: + 98 21 22876451
Fax: + 98 21 22891297
Web: www.artinbonyan.biz
E-mail: info@artinbonyan.biz

SEE THE AFPS-643/Q
ONLINE HERE!!!



Download a QR Code Scanner App for your smartphone and experience Peddinghaus in the palm of your hand!!!

peddinghaus.com/facebook

peddinghaus.com/twitter

peddinghaus.com/youtube

peddinghaus.com/linkedin