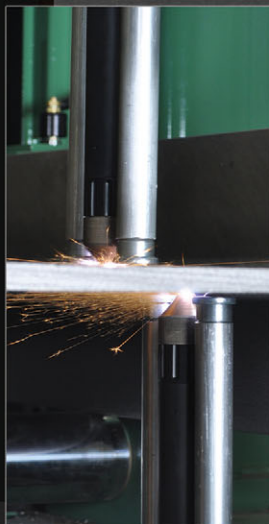


Peddinghaus

PeddiWriter 1250

AUTOMATIC LAYOUT MARKING MACHINE



A Letter from the CEO



Anton Peddinghaus

Welcome to the World of Peddinghaus – The World of “BETTER”.

In the world of Peddinghaus we aim to be better. Take a look at any of our 5,000+ installations throughout the globe. These fabricators experience reduced costs and higher production using our equipment. Why? Because with Peddinghaus they receive better technology, better service, and better quality than anyone else can provide. These things aren't easy to do, and not every company can guarantee what Peddinghaus does. I am proud that I can say these things because at Peddinghaus we work harder than anyone to give our customers the best. Whether they are located in New York, Los Angeles, or Chicago; they all receive the very same service, spare parts, and support that is second to none.

Welcome to Partnerships – From Software to Service to Sales.

At Peddinghaus we maintain strong partnerships with industry leaders to ensure your success. Whether this is our relationship with leading software providers (such as Shop Data Systems, Sigmanest, Steel Office, AceCad, Tekla, FabTrol, Design Data, and more) or our partnership with regional sales and support organizations – our goal is to work together to serve you better.

Welcome to the PeddiWriter CNC Layout Marking Machine – More than Just a Machine.

As the steel construction industry continues to evolve, Peddinghaus locates new ways to reduce labor costs, and increase our customers' profitability. As a result, the all new PeddiWriter CNC layout marking machine isn't just about world class electronics or clever mechanical design; its about providing the absolute latest in labor saving technology to the global marketplace. The very first machine of its kind, the PeddiWriter has achieved unprecedented success beginning at the very first installation.

Here is just a taste of what customers report as a result of the PeddiWriter:

- Annual labor savings starting at \$300,000
- Automated layout marking equal to that of 6-8 layout personnel, with unmatched accuracy
- Layout marking of as many as 153 profiles in a single 10 hour shift, and averaging 60-70 profiles in a single 10 hour shift

I have to admit that even I was surprised when I saw the results of the PeddiWriter in action, but believe me, everything you hear is true. To prove this take a moment to read what our customers are saying about this machine. If that isn't enough, contact us and we'll send you the video, or schedule a visit to one of these fine installations. We firmly believe that nobody is a better judge of our technology than our valued users.

Welcome to Peddinghaus Service – Unmatched Global Support.

At Peddinghaus service is priority number 1. Peddinghaus' global team of customer support representatives are on duty, on call, all the time at our very own 24 hour customer support center. Combined with state-of-the-art remote diagnostic software, readily available local field support professionals, and the industry leading warranty – customer support from Peddinghaus is only a call or a click away.

Welcome to Peddinghaus – A Tradition of Innovation, a Reputation for Excellence.

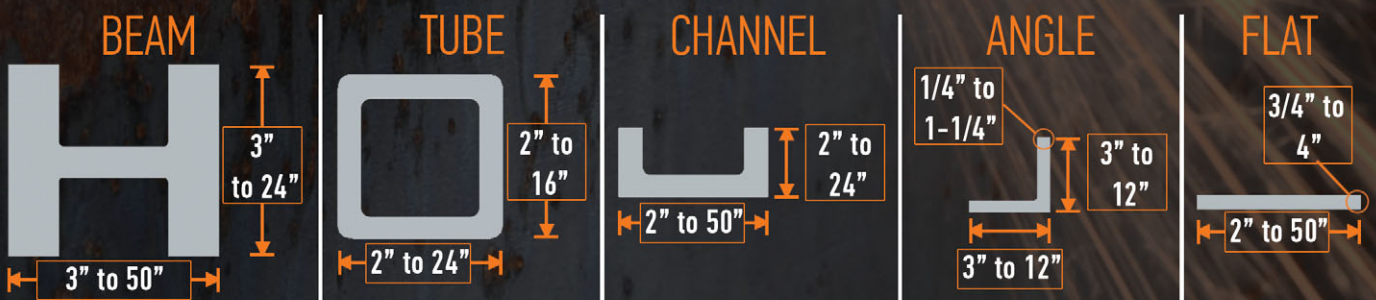
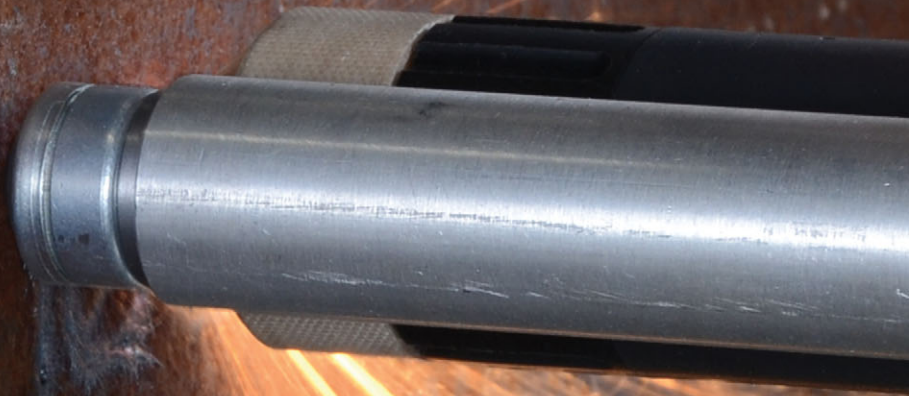
My great-grandfather and grandfather perfected Ironworkers during their time with Peddinghaus; then it was my father's turn to pioneer the TDK drill line. In today's world I am proud that we at Peddinghaus continue to offer new solutions for our customers such as the PeddiWriter. This is only possible through constant innovation, and continuing investment in research and development. I invite you to see why Peddinghaus technology is the chosen provider for steel fabricators the world over.

A handwritten signature in black ink that reads "Carl G. Peddinghaus". The signature is written in a cursive style.

Carl G. (Anton) Peddinghaus | Chief Executive Officer | Peddinghaus Corporation

Streamline the Layout of any Welded Connection Including:

- Web Stiffeners
- Welded Splice Plate
- Base Plates
- Gusset Plates
- Shear Tabs / Fin Plates
- Cap Plates
- Flexible End Plates
- Welded Angle Seats
- Bearing Pads
- Welded Beams to Columns
- Haunched Beam End Plates
- Welded Flange Plates
- Uniform Force Bracing Connections
- Moment Connections
- And Many More ...



Maximum length is dictated by a maximum material weight of 43,800lbs. Machine is rated for sections up to 1,000 lbs per ft.

Technical Specifications

| | |
|--------------------------------|----------------------------------------|
| Maximum Profile Weight | 43,800 lbs. |
| Type of Marking | Plasma Marking |
| Number of Marking Assemblies | 2 Hypertherm ArcWriter Torches |
| Markable Surfaces | Top & Bottom Web + Top & Bottom Flange |
| Surfaces Marked Simultaneously | 2 Surfaces |



Bust the Layout Bottleneck

The First Ever Fully Automatic and Standalone Layout Marking System

Accelerate the layout of structural sections with the all new PeddiWriter from Peddinghaus

Imagine One Machine That Can ...

- Mark on all 4 sides of a profile as a standalone operation. Drill with your drill line, write with the PeddiWriter!
- Layout faster and more effectively than ever before with a dual torch system - do the work of an entire team of layout personnel with a single machine!
- Minimize the potential for human error by eliminating manual measurement.
- Minimize the overhead and human error associated with manually laying out and marking weld data onto a profile.
- Streamline material handling by minimizing crane lifting of a section to and from a layout station.
- Easily integrate into your existing Peddinghaus system due to its modular design.



What's the Difference? Old Way vs. New Way

| | MANUAL METHODS | PEDDIWRITER |
|-----------------------|-----------------------------------|----------------------------------|
| Overall Speed | SLOW - Completely Manual | FAST - Fully Automatic |
| Slows Other Processes | YES - Requires Regular Crane Use | NO - Standalone |
| Accuracy | UNPREDICTABLE - Manual | SUPERIOR - CNC Controlled |
| Repeatability | UNPREDICTABLE - Manual | SUPERIOR - CNC Controlled |
| Labor Cost | HIGH - Multiple Employees | LOW - 1 Operator |
| Material Handling | HIGH - Requires Regular Crane Use | LOW - Roller Handling System |
| Labor Skill Level | HIGH - Skilled Trade | MINIMAL - Automated Program |
| Footprint | HIGH - Several Fitup Stations | MINIMAL - 1 Machine and Handling |

Do the Work of Five Layout Workers with One PeddiWriter.

| MANUAL LAYOUT | | PEDDIWRITER | |
|------------------------|-----------------------------------------------------------|----------------------------|-----------------------------------------------------------|
| Cost of 1 Worker/Hour | \$50 per Hour Based on Surveyed Average | Cost of 1 PeddiWriter/Hour | \$50 per Hour Based on Surveyed Average |
| Cost of 1 Worker/Year | \$100,000 per Year Based on \$50/Hour × 2,000 Hrs/Year | Cost of 1 PeddiWriter/Year | \$100,000 per Year Based on \$50/Hour × 2,000 Hrs/Year |
| Cost of 5 Workers/Year | \$500,000 per Year Based on \$100,000 × 5 Workers | Total | \$200,000 Annually |
| Total | \$500,000 Annually | | |

Easily Save \$300,000 Each Year

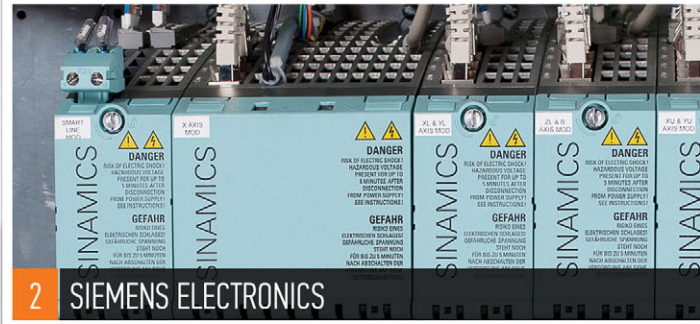
Another Industry First From Peddinghaus





1 INDEPENDENT TOP TORCH

- Multi-axis articulating torch
- For marking on the top of profile, top flange and bottom flange
- Completely independent from the underside marking system for simultaneous marking
- X-axis motion independent from material drive rollers



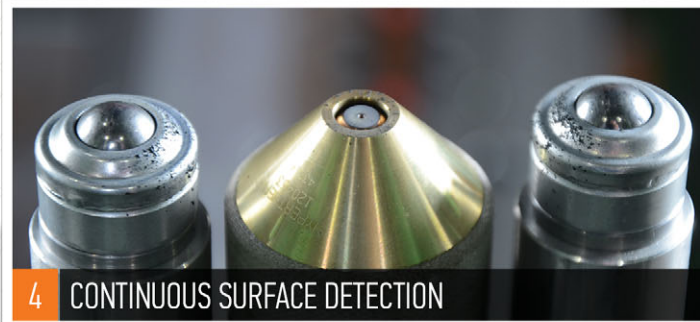
2 SIEMENS ELECTRONICS

- All the electronics on the PeddiWriter are state-of-the-art Siemens solutions
- 10 year spare parts guarantee



3 HYPERTHERM ARCWRITING

- Industry leading plasma marking technology
- Layout marking and character designation fully visible through regular amounts of scale or rust
- 2 units, each mounted on the machine for minimized footprint
- Superior speed and versatility



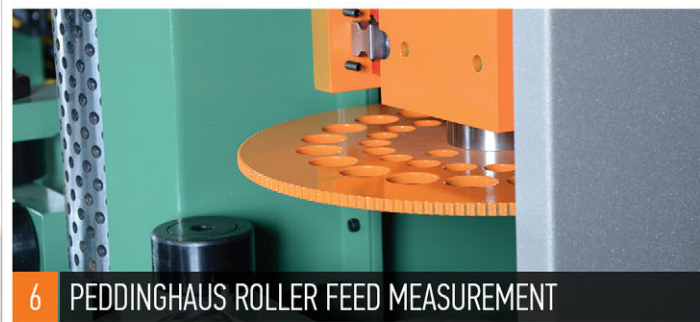
4 CONTINUOUS SURFACE DETECTION

- Eliminate the need to apply redundant torch probe sequences
- Mechanical surface detection maintains proper torch standoff while marking throughout a program



5 INDEPENDENT BOTTOM TORCH

- For marking on the bottom of a profile
- Completely independent from the top torch mechanism
- X-axis motion independent from material drive rollers
- Mark using both torches simultaneously with ease



6 PEDDINGHAUS ROLLER FEED MEASUREMENT

- The industry standard for Roller Measurement
- Superior accuracy and flexibility on all profiles
- Easily integrate into an existing system due to the completely modular design



7 PEDDINGHAUS CONTROL

- Robust and intuitive user interface
- Siemens 10 year spare parts guarantee
- Allows for modern remote assistance and Web Cam technology for fast and painless troubleshooting

Fabricator's Spoke...

"My most expensive labor is in layout and fit-up, an automatic layout machine makes perfect sense! A machine like this can be used on ALL welded members!!!"

"I took a walk in my shop and realized all of my fitters are near retirement! Fitters are hard to find and EXPENSIVE skilled labor. A standalone solution is NEEDED!!"

Peddinghaus Listened...

Introducing Fully Automated Layout Marking

The PeddiWriter from Peddinghaus Corporation places layout processes at center stage. No longer are complex CNC machines such as drill lines, angle lines, or plate lines supported by manual measurement practices. No longer are you limited to just adding an underside marking option to an existing drill line. With Peddinghaus layout marking is not an afterthought, it is the focal point of top to bottom efficiency.

Hypertherm ArcWriting

Hypertherm ArcWriting systems are applied by the PeddiWriter to 4-axis layout marking. This allows for superior marking times, and maximum return on investment. Plasma marking maintains its visibility on all surface finishes whether they are blast cleaned, or possess regular amounts of rust or scale.

Innovative Surface Detection System

Unlike traditional thermal processors that rely on the need to continuously probe material at each torch start, the PeddiWriter applies a mechanical roller probe system. This allows the machine to maintain proper standoff distance from material during a marking program, while eliminating timely probing sequences.

The Industry Standard for Roller Measurement

Peddinghaus Roller Measurement is combined with 4-axis automated layout marking for total flexibility. The very same method of measurement that is applied to the technology of drill lines, angle lines, automatic coping machines and plate processors is now dedicated to the process of layout marking.



Peddinghaus Software

Linking Design to Fabrication

Peddinghaus Raptor CAD/CAM Platform

Raptor software from Peddinghaus is today's premier structural machine tool CAD/CAM platform. Equipped with versatile modules intended to import, design and export part programs, Raptor is fully customizable for the unique needs of the individual fabricator.

The DSTV Import Module

Raptor seamlessly integrates with popular Building Information Modeling (BIM) platforms capable of generating DSTV files using the DSTV Import Module. Commonly used BIM platforms include SDS/2 from Design Data, Tekla Structures, SteelOffice, Graitec and more.

The Tekla API Import Module

The Tekla API Module allows for the direct importation of Tekla part files into Raptor Software, eliminating the need to convert into an intermediary file type.

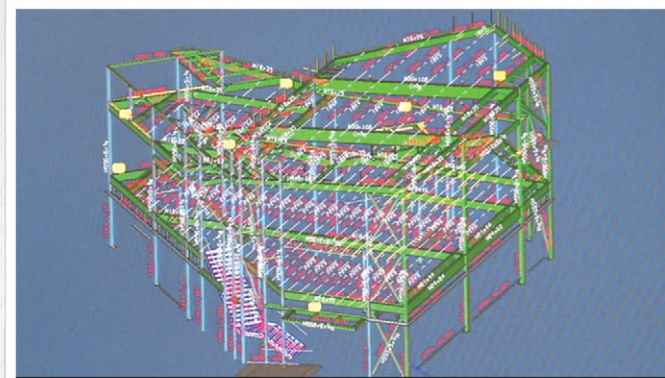
By referencing part data within a Tekla BIM model, Raptor's Tekla API Module is capable of automatically generating scribe marks, and weld locations based on the model's original geometry. Using Raptor's Tekla API, Peddinghaus bridges the gap between design intent and final fabrication. This is ideal for machines which utilize 4-Axis layout marking hardware.

The 3D Module - Modify, Inspect, Create

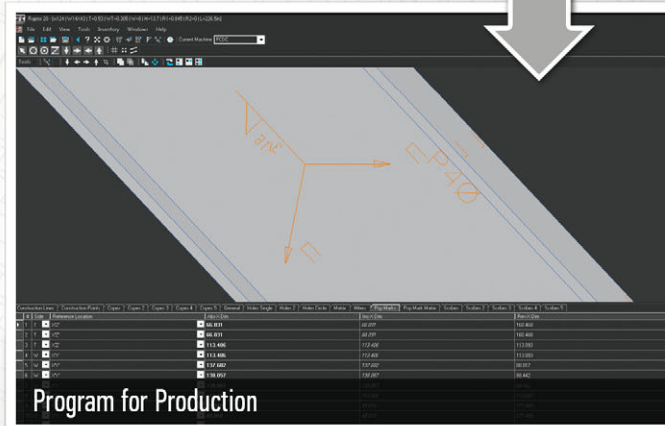
The core of Raptor is the 3D Module. If part data has been imported into Raptor, the 3D Module works as an inspection tool and is capable of modifying imported information. If part files need to be created, the intuitive design and user friendly interface of the 3D Module allows for powerful programming options.

The Peddimat Legacy Export Module

The Peddimat Legacy Export Module provides users the opportunity to create Peddimat files using Raptor. This export option allows users to develop part programs for operation on legacy machines that do not have a Raptor post processor, or do not have an active license of Raptor present at the control.



Design and Export



Program for Production



Process



Fabricate

Raptor Software Modules

| | |
|---------------------------|------------------------------------------------------------|
| IMPORT | Tekla API / DSTV / DSTV+ iDSTV / iDSTV+ / Peddimat |
| MODIFY / INSPECT / CREATE | 3D Module |
| EXPORT | Post Processor / DSTV / DSTV+ iDSTV / iDSTV+ / Peddimat |



Peddinghaus

InduStar
HYPER THERM

26

PeddiWriter User Testimonials

DOHERTY STEEL INC.
Paola, Kansas - USA



With our PeddiWriter I don't have to worry about workers making mistakes when laying out. Before the machine, we factored out our error rate at around 17%. With the installation of the PeddiWriter, we went to 1-3% error rates while increasing our shop capacity at the same time.

- Chance Doherty, Shop Foreman

Production is what we were looking for from the PeddiWriter. The PeddiWriter has cut (on average) 3 to 4 man hours per shop employee from our overhead. Right now we have it automating the piece mark of the main member, placing locations for saw cuts, any locations for stiffeners with a piece mark included, and weld symbols for the individual pieces.

- Chase Doherty, Project Manager

We eventually came up with the fact that we couldn't live without the PeddiWriter. Once we got it running, our layout times were reduced to practically nothing. Something that had previously taken an hour to an hour and a half now takes 15 minutes with the PeddiWriter.

- Dennis Doherty, President

GEM BUILDINGS
Brigham City, Utah - USA



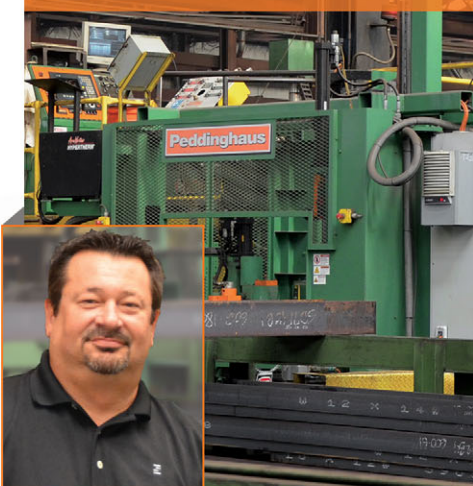
We really struggled to bring on fitters and layout people that were qualified and competent to be able to fit up and layout pieces. Our previous knowledge of Peddinghaus led us to feel comfortable and really excited about the acquisition of the PeddiWriter in order to solve that fitting and layout challenge.

- Kyle Hansen, President

From everyone's input, we started looking at the next step in production and that was layout and fitting. Peddinghaus was our obvious choice. We recently had a complicated column come through that took 15 minutes to scribe. That would have taken around an hour and twenty minutes using previous methods to scribe and mark up in the shop with soap stone manually.

- Shaun Christensen, Director of Operations

STEEL SERVICE CORP.
Flowood, Mississippi - USA



The PeddiWriter is the first machine you can install, and be making your money back right away. It helps you when you can look at both the drawing and the piece with it already laid out - the entire process speeds up. I've seen 5-10% increase in tonnage right away.

- Doug Fiorilli, Vice President

The Peddinghaus machines are the Cadillac of the steel working industry. The quality of the design of the machine and the bulk that it's built around. We run these Peddinghaus machines day-in day-out, 20 hours a day.

- Terry Bellis, Maintenance Manager



Peddinghaus

123815-30 DEMAG 8t

123815-20 DEMAG 8t

CODEME
SISTEMAS TM AGC

PRECAUCION
NO ANDAR SOBRE
LOS MODULOS DE
TRANSPORTE

PRECAUCION
NO ANDAR SOBRE
LOS MODULOS DE
TRANSPORTE

PeddiWriter User Testimonials

WAIWARD STEEL FABRICATORS
Edmonton, Alberta - Canada



We explored the best location in our shop for the PeddiWriter, and we positioned it after our drill lines, integrating with our Peddinghaus conveyor/transfer handling system. Today we average about 60 beams/columns per our 10 hour shift. Also, with the plasma technology, we don't use many consumables - We have spent only \$50 on plasma electrodes and nozzles in 3 months on a multi-shift basis.

- Robi Dosanj, Detail Foreman

The PeddiWriter machine concept was very intriguing for us - could one machine actually "write" all the data onto a beam - just like our existing layout and fitters? The answer is "YES"!

- Terry Degner, President

AGATE STEEL INC.
Scottsdale, Arizona - USA



In the 3 months we have had the machine, it has increased our productivity 25% across the board. This is not only how much faster fitting is, it is how much faster we are in all aspects of production as a fabricator.

This machine has made a substantial difference in our productivity. We tested a part that used to take us 1 hour and 40 minutes to layout manually on the PeddiWriter. That part was completed in 8 minutes! If the PeddiWriter were removed from our facility today, we would need at least 6-8 layout men to replace the productivity of the machine. These are people you just can't find in today's labor market.

- Les McCauley, Vice President



The Best Support in the Industry

Peddinghaus strives to provide an unparalleled level of service for industry partners, no matter where in the world they are located. This is done by offering the only 24 hour technical support center in the industry and employing an expansive team of field service technicians throughout the globe.

24 Hour Technical Support Center

Located in Bradley, Illinois – USA, Peddinghaus maintains a 24 hour technical support center to assist customers with any questions or concerns that may arise in the operation of Peddinghaus machinery. Service technicians leverage remote diagnostic software as well as web cameras in order to troubleshoot questions. Over 95% of telephone calls are resolved without the need for an on-site visit from a Peddinghaus technician.

Global Access to Spare Parts

Peddinghaus maintains vast amounts of spare parts at their North American locations and are in close proximity to major ports and shipping hubs. For international partners, local spare parts storage is maintained at our sales and service offices around the globe. In addition, local dealer representatives and dedicated parts storage facilities have been established throughout the world to expedite part shipments. This means faster delivery of parts when they are needed.

Expansive Team of Field Service Technicians

For advanced issues, over 50 field service technicians are employed by Peddinghaus throughout the world. Technicians are conveniently located geographically and may be based out of an office near your installation. These technicians operate globally and are available for on-site assistance.

World Class Training for Maintenance Staff, Operators and Programmers

Peddinghaus offers training on-site, over the internet and at their corporate headquarters for maintenance staff, operators and programmers. Training at Peddinghaus' global headquarters is free of charge for those willing to make the trip and provides staff with direct access to the masters behind the machinery.



Peddinghaus

www.peddinghaus.com

Peddinghaus USA • (815) 937-3800 | Peddinghaus UK • +44 1952 200 377 | Peddinghaus Germany • +49 (0) 2332 72-0
Peddinghaus Latin America • +52 81-1001-7087 | Peddinghaus Española • +34 945 465370