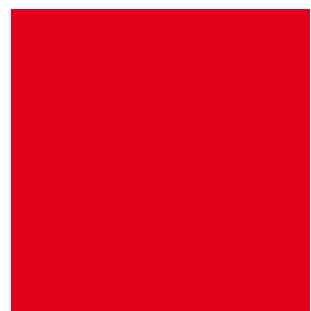
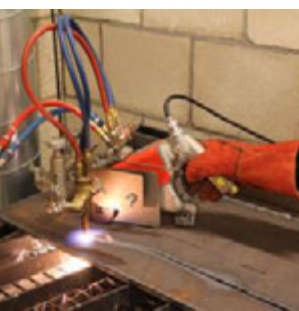
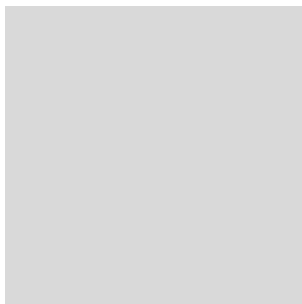
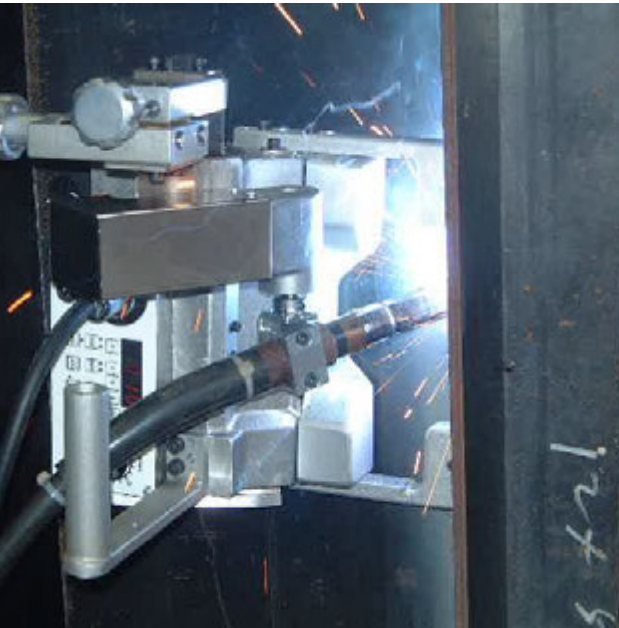
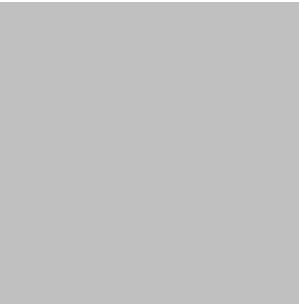


Portable Machines and Gas Equipment Product Catalogue





KOIKE – the spirit of cutting.

Established in 1918 in Japan,
customers active in shipbuilding, steel construction, vehicle manufacturing, fabrication
and other heavy metal industries trust on nearly 100 years of KOIKE's cutting expertise.

Advanced technology combined with face to face relationship and an in-depth
understanding of customers cutting needs - that's what KOIKE as a Japanese manufacturer
of oxy-fuel, plasma and laser cutting technology stands for.

Table of Contents

Portable Cutting Machine

Handy Auto / Handy Auto Plus	4
IK-12 Beetle	6
IK-93T Hawk	8
IK-93T Edge-Cut	10
IK-12 Max3	12
IK-72T	18
Picle-1-II	22
Auto Picle - S	24
Auto Picle Plasma	26
KHC-600D	28
Mini-Mantis II	30
IK-82 Series	32
Cir-Cut II	34
IK-70 Model 1000	36

Portable CNC Cutting Machine

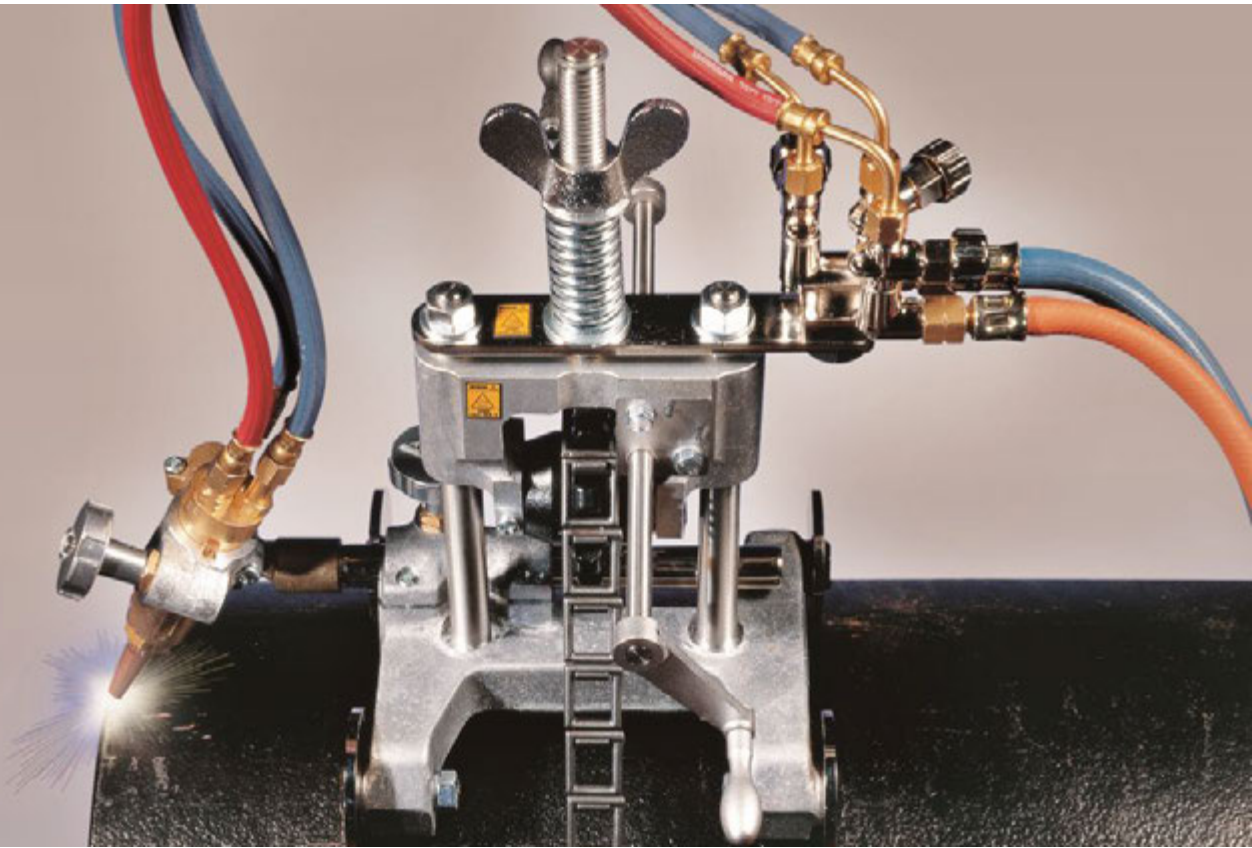
PNC-12 Extreme	38
----------------------	----

Portable Welding Machine

WEL-HANDY MINI STRONG	44
WEL-HANDY MULTI II Series	48
IK-2W Series	54

Gas Equipment

Apollo Global Coupling	58
Hand Torches	62
Cutting Nozzles	66
Oxy-fuel Cutting Accessories	72



PICLE-1-II

Manual Pipe Cutting Machine

Features and Benefits

- **Manual pipe cutting machine**
No power/electricity needed to cut pipe; ideal for field use
- **Oxy-fuel pipe cutter**
Bevel cuts or straight cuts on steel pipe
- **Interlocking link chain system**
Swiftly adapts to any pipe diameter
- **Extremely smooth feed**
Worm gear with low transmission ratio
- **Accurate bevel angle**
Bevel collar with angle indicator for easy and accurate bevel setting
- **Lightweight**
At only 8.5 kg, this unit is easy to carry, operate and maintain
- **Very low maintenance**

Picle-1-II is a manually operated pipe cutting machine for cutting and bevelling pipes. Equipped with a chain and worm gear drive system with low transmission ratio, leading to an absolutely frictionless feel.



Extremely smooth feed

Quality pipe cutting without electrical power

PICLE-1-II's extremely smooth feed makes the machine handy and easy to operate. The drive chain is comprised of durable, interlocking links that can easily be added or removed for quick change of pipe diameters.

A graduated bevel collar ensures accurate bevel setting. The control valves for fuel, preheat and cutting oxygen are positioned from heat yet conveniently placed for easy operator use.



Accessories

Optional accessories

Accessory	Stock #	Description
Extension chain 1 m	31131	1 m chain links



Extension chain 1m



Chain links can be adjusted easily for various pipe diameters.

Type and Specification

Specification

	PICLE-1-II
Cutting thickness	5 -50 mm
Cutting speed	Manually adjusted
Cutting diameter	Ø 114 ~ 600 mm
Torch up/down stroke	50 mm
Torch lateral stroke	100 mm
Bevel angle	0 ~ 45°
Drive system	Worm gear and chain
Input power	Not required
Dimension	L410 x W210 x H410 mm
Weight	8.5 kg

Types

Model	Stock #
PICLE-1-II	90110

Scope of delivery

Scope of delivery
Machine body with torch set
Chain link (80 pcs. for 600mm pipe diameter)
Cutting nozzles (102HC or 106HC, size #0, 1, 2)
Power cable
Standard tool set
Operation manual



Koike Europe B.V.

Grote Tocht 19
1507 CG Zaandam
The Netherlands

Tel +31-(0)75 - 612 - 7227
Fax +31-(0)75 - 670 - 2271
info@koike-europe.com
www.koike-europe.com



Artin Bonyan Co.

No.2, Jolfa Str, Tehran, Iran (IR)
Phone: + 98 21 22891307
Fax: + 98 21 22891297
Web: www.artinbonyan.com
E-mail: info@artinbonyan.com