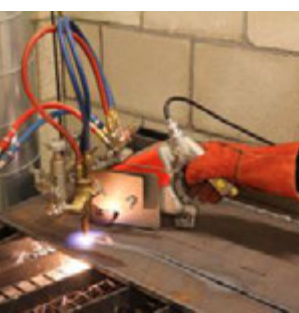
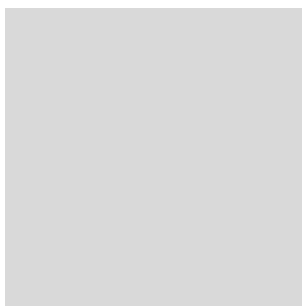
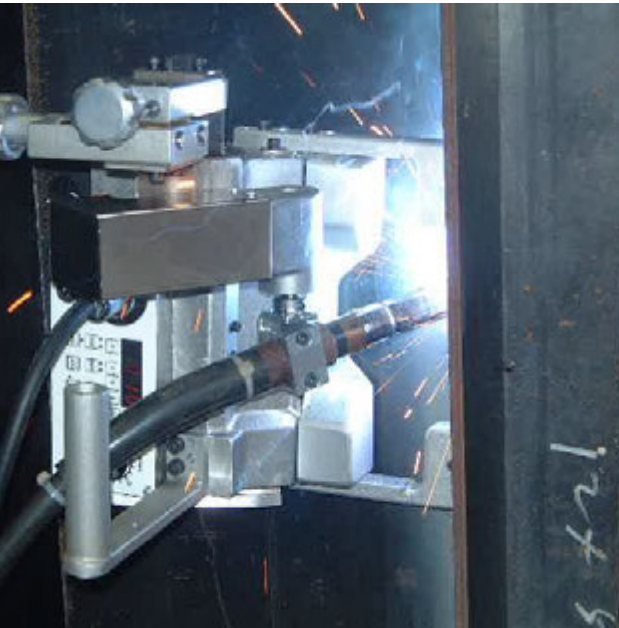
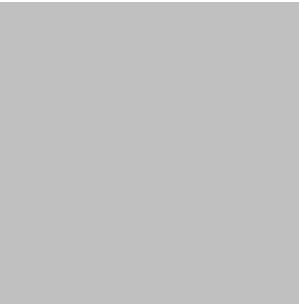


# Portable Machines and Gas Equipment Product Catalogue





**KOIKE – the spirit of cutting.**

Established in 1918 in Japan,  
customers active in shipbuilding, steel construction, vehicle manufacturing, fabrication  
and other heavy metal industries trust on nearly 100 years of KOIKE's cutting expertise.

Advanced technology combined with face to face relationship and an in-depth  
understanding of customers cutting needs - that's what KOIKE as a Japanese manufacturer  
of oxy-fuel, plasma and laser cutting technology stands for.

# Table of Contents

---

## Portable Cutting Machine

Handy Auto / Handy Auto Plus .....	4
IK-12 Beetle .....	6
<b>IK-93T Hawk .....</b>	<b>8</b>
IK-93T Edge-Cut .....	10
IK-12 Max3 .....	12
IK-72T .....	18
Picle-1-II .....	22
Auto Picle - S .....	24
Auto Picle Plasma .....	26
KHC-600D .....	28
Mini-Mantis II .....	30
IK-82 Series .....	32
Cir-Cut II .....	34
IK-70 Model 1000 .....	36

## Portable CNC Cutting Machine

PNC-12 Extreme .....	38
----------------------	----

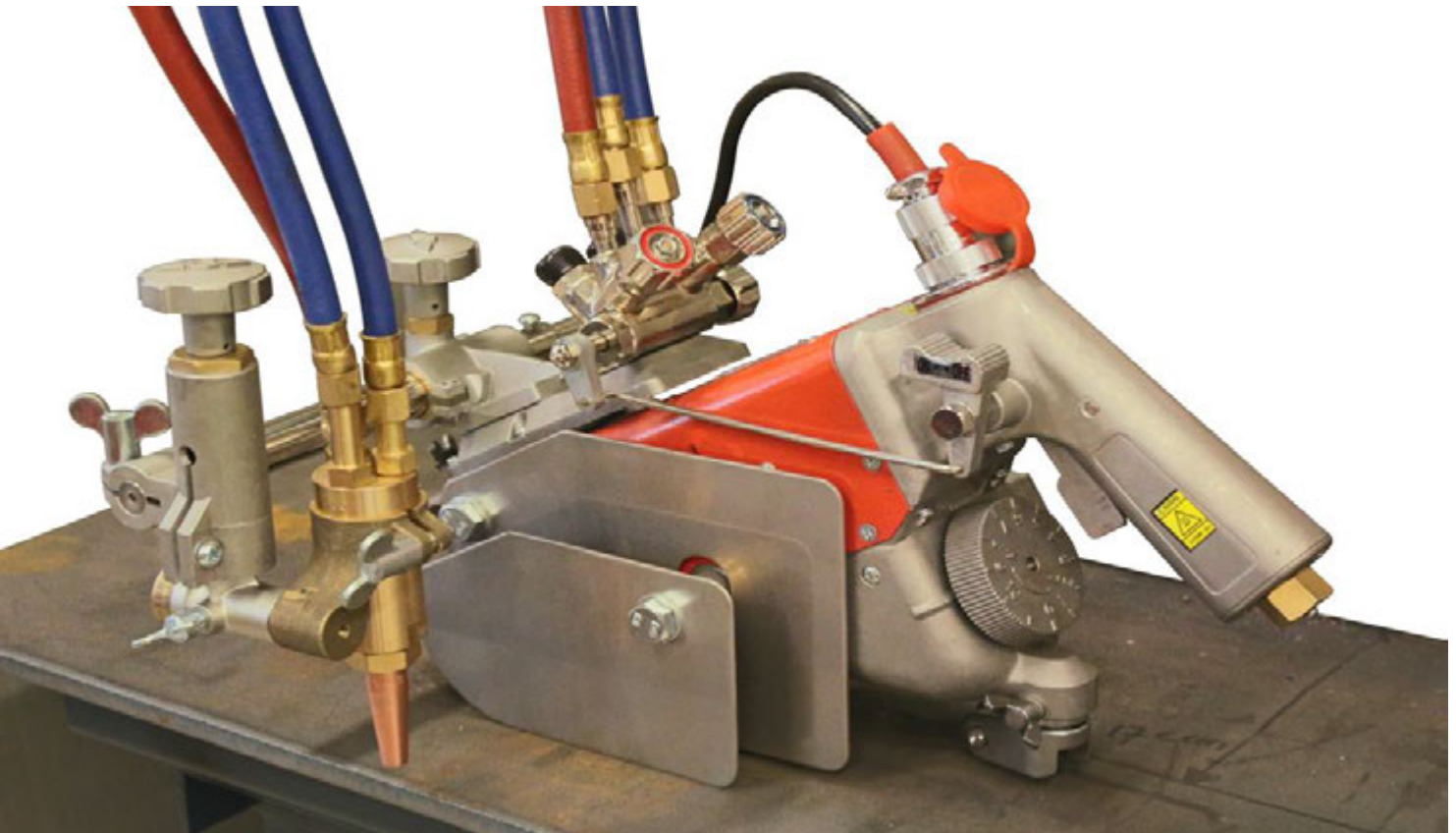
## Portable Welding Machine

WEL-HANDY MINI STRONG .....	44
WEL-HANDY MULTI II Series .....	48
IK-2W Series .....	54

## Gas Equipment

Apollo Global Coupling .....	58
Hand Torches .....	62
Cutting Nozzles .....	66
Oxy-fuel Cutting Accessories .....	72

---



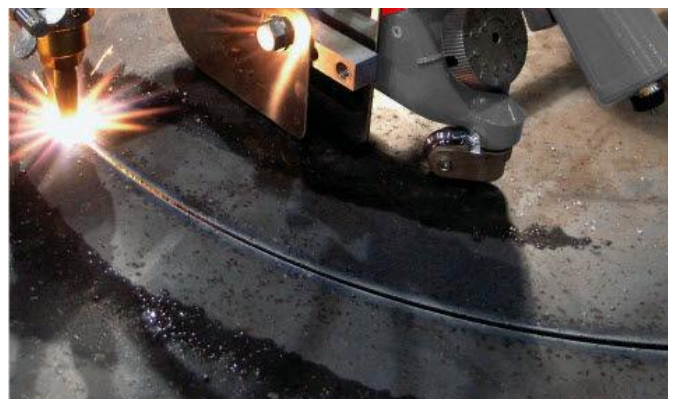
# IK-93T HAWK

## Mechanized Manual Guiding Cutting Machine

### Features and Benefits

- **Pistol shape control grip**  
Ergonomically designed grip provides comfortable handling of the machine.
- **Centralized control**  
All functions including cutting oxygen, clutch operation and speed adjustment are located at the grip for ease of operation by one hand.
- **Multiple use oxy-fuel cutting machine**  
All of straight line, hand guide, circle and plate edge bevel cutting can be done by selecting a suitable option.
- **Compact and lightweight**  
Machine weighs only 7.2 kg. Together with the slim body and handling grip, machine can be carried from plate to plate easily.
- **Bevel collar**  
Torch angle can be set accurately using graduated bevel collar.

The **IK-93T Hawk** is a portable gas cutting machine developed primarily for the purpose of high quality straight line, hand guided cutting. In addition to featuring high cutting quality, it also demonstrates unprecedented smooth operation and mobility.





Hand guided cutting

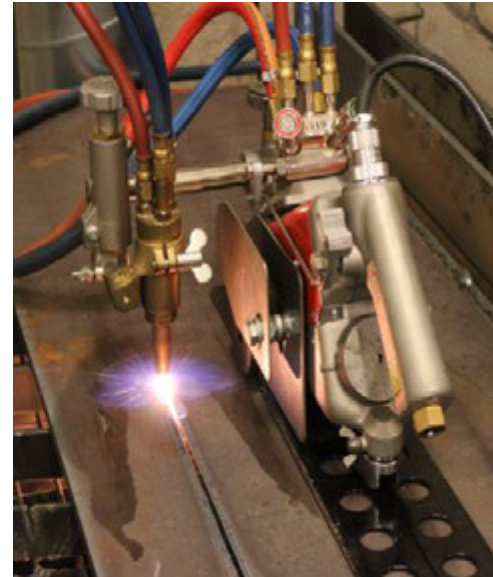
## High quality multi purpose cutting

### Machine handle with centralized controls

**IK-93T Hawk** is designed with the emphasis on ease of operation with one hand. Its centralized control features a convenient speed adjustment dial, travel switch, clutch and cutting oxygen operation lever.

Single wheel drive system provides maximum manoeuvrability, making it easy to change machine travel direction during cutting. The narrow and lightweight IK-93 rail is easily carried and placed.

The angle indicator on the torch holder ensures accurate bevel cuts. Together with optional accessories, wide variety of plate cutting can be achieved with **IK-93T Hawk**.



Straight cutting with IK-93 rail

## Accessories

### Optional accessories

Accessory	Stock #	Description
Extension rail 1800 mm f. IK-93	90018	
Circle cutting attachment f. IK-93	33353	Cutting diameter: Ø 100 - 1100 mm
Plate edge guide roller	T60038959	For bevel cuts along plate edge. Counter weight recommended.
Transformer AC230V - 42V	222.002.207	For 42V models

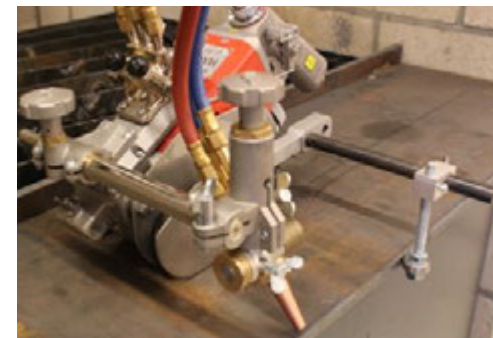


Plate edge guide roller option

## Type and Specification

### Specification

	IK-93T Hawk
Cutting thickness	5 - 100 mm
Cutting speed	100 - 1000 mm/min
Bevel angle	0 ~ 45°
Clutch	Trigger type mechanical clutch
Speed control	Control IC
Heat shield	Doubled shield for thermal protection
Input power	AC 220V / AC 42V
Dimension (excl. torch unit)	L380 x W130 x H210 mm
Weight	7.5 kg

### Types

Model	Stock #
IK-93T Hawk B-type 42V	TBPJ64009-20
IK-93T Hawk B -type 220V	TBPJ64009-16

### Scope of delivery

Scope of delivery
Machine body with torch set (including slide bar)
Cutting nozzles (102HC or 106HC, size #0, 1, 2)
Power cable
Standard tool set
Operation manual



*Your cutting needs - achieved.*



**Artin Bonyan Co.**

No.2, Jolfa Str, Tehran, Iran (IR)

Phone: + 98 21 22891307

Fax: + 98 21 22891297

Web: [www.artinbonyan.com](http://www.artinbonyan.com)

E-mail: [info@artinbonyan.com](mailto:info@artinbonyan.com)

**Koike Europe B.V.**

Grote Tocht 19  
1507 CG Zaandam  
The Netherlands

Tel +31-(0)75 - 612 - 7227

Fax +31-(0)75 - 670 - 2271

[info@koike-europe.com](mailto:info@koike-europe.com)

[www.koike-europe.com](http://www.koike-europe.com)