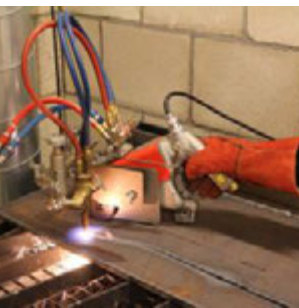
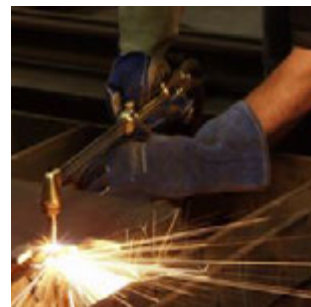
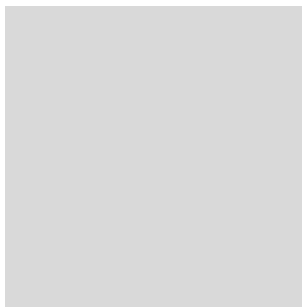
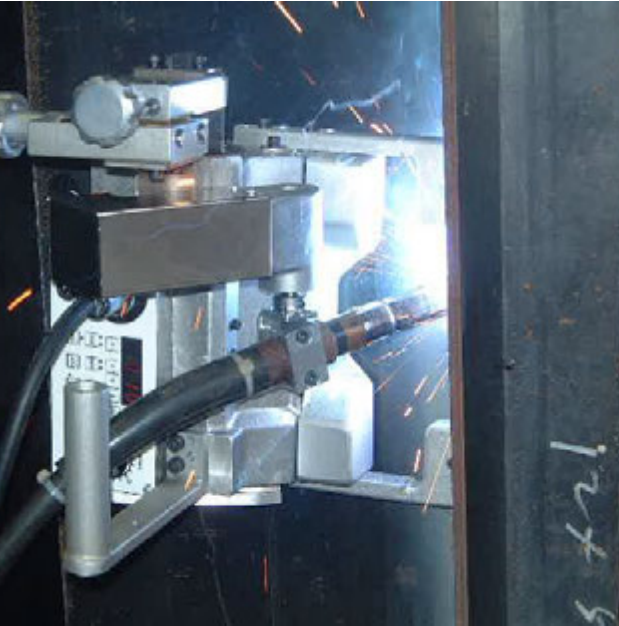


Portable Machines and Gas Equipment Product Catalogue





KOIKE – the spirit of cutting.

Established in 1918 in Japan,
customers active in shipbuilding, steel construction, vehicle manufacturing, fabrication
and other heavy metal industries trust on nearly 100 years of KOIKE's cutting expertise.

Advanced technology combined with face to face relationship and an in-depth
understanding of customers cutting needs - that's what KOIKE as a Japanese manufacturer
of oxy-fuel, plasma and laser cutting technology stands for.

Table of Contents

Portable Cutting Machine

Handy Auto / Handy Auto Plus	4
IK-12 Beetle	6
IK-93T Hawk	8
IK-93T Edge-Cut	10
IK-12 Max3	12
IK-72T	18
Picle-1-II	22
Auto Picle - S	24
Auto Picle Plasma	26
KHC-600D	28
Mini-Mantis II	30
IK-82 Series	32
Cir-Cut II	34
IK-70 Model 1000	36

Portable CNC Cutting Machine

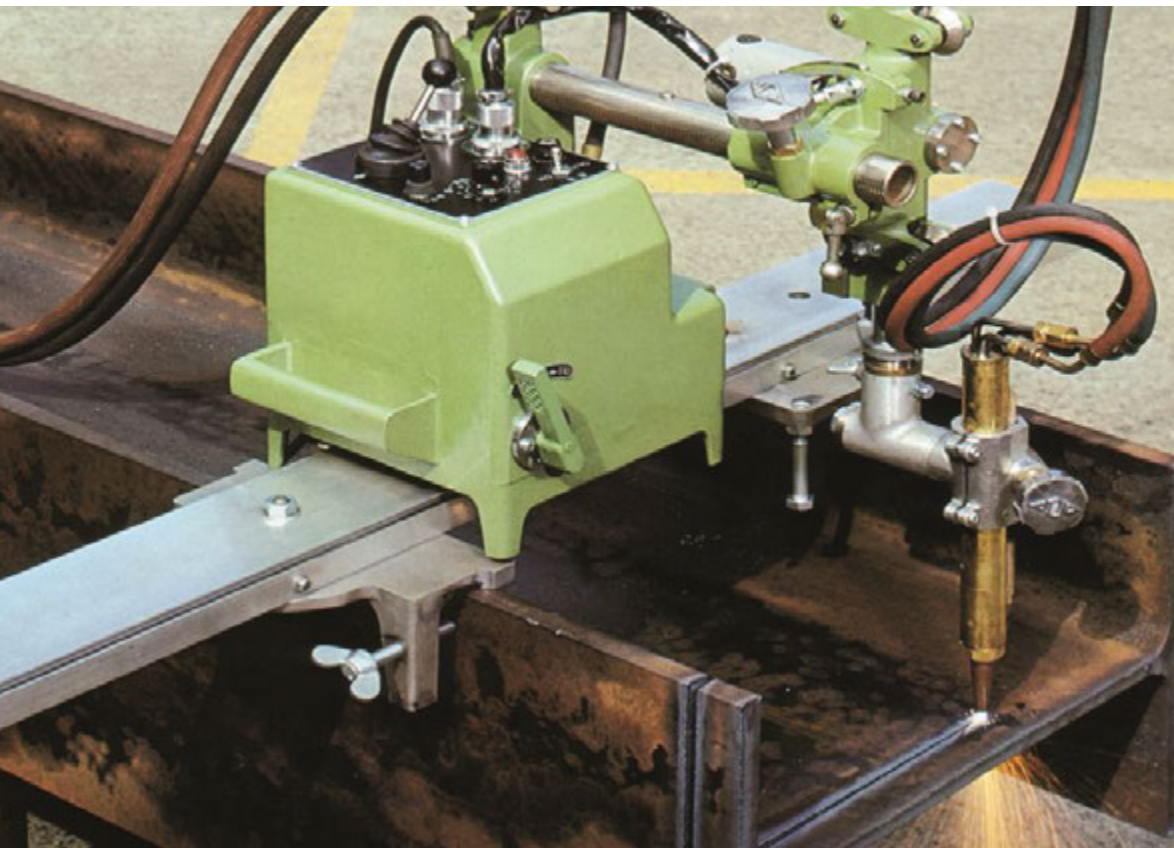
PNC-12 Extreme	38
----------------------	----

Portable Welding Machine

WEL-HANDY MINI STRONG	44
WEL-HANDY MULTI II Series	48
IK-2W Series	54

Gas Equipment

Apollo Global Coupling	58
Hand Torches	62
Cutting Nozzles	66
Oxy-fuel Cutting Accessories	72



MINI-MANTIS II

H-Beam Cutting Machine

Features and Benefits

- **Three rail types**
Makes web and flange cutting easy and efficient.
- **Adjustable rail and rack bar angle**
Allows diagonal cuts on web and flange
- **Flame pre-set function**
Set preheat only once; saves time and gas
- **4-Way jog direction control**
Controls both flange and web cutting with one direction switch
- **Long flange bar option**
For cutting of longer flanges up to 700 mm
- **Lightweight and portable**
The body and vertical units weigh 15kg; easy to carry and use in tight spaces

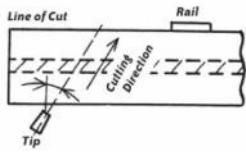
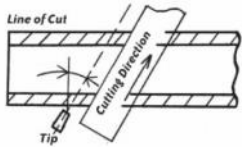
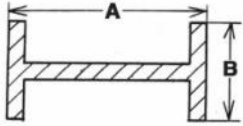
The **Mini-Mantis II** is a semi-automatic gas cutting unit for rapid and precise cutting of H-beam web and flange.

KOIKE's quality construction, ensuring durability and trouble-free operation, and you have an economical, efficient, compact gas cutting machine for H-beam steel.



Semi-automated H-beam cutting

Ideal for various types of H-beam steel



The **Mini-Mantis II** provides high-precision diagonal cuts that are clean and sharp. Two motors drives the torch for both web and flange cutting. No need to turn and mark the workpiece.

Right angle cutting capacity

- Web cutting ("A" in the diagram)

- 150 - 600 mm: 600-ST rail
- 150 - 900 mm: 900-ST rail
- 900 - 1500 mm: 1500-ST rail

- Flange cutting ("B" in the diagram)

- 150 - 400 mm: Standard
- 150 - 700 mm: With optional Slide bar 1200L

Diagonal cutting capacity

- 30 degrees maximum for both web and flange cutting.

Accessories

Optional accessories

Accessory	Stock #	Description
600-ST rail	90234	600mm effective cutting , rail lengths 1100 mm
900-ST rail	90235	900 mm effective cutting , rail lengths 1400 mm
1500-ST rail	90136	1500 mm effective cutting, rail lengths 2100 mm
Slide bar 1200L	32027	700 mm vertical stroke for flange cutting
Transformer AC230V - 110V	90100	For 110V models

Type and Specification

Specification

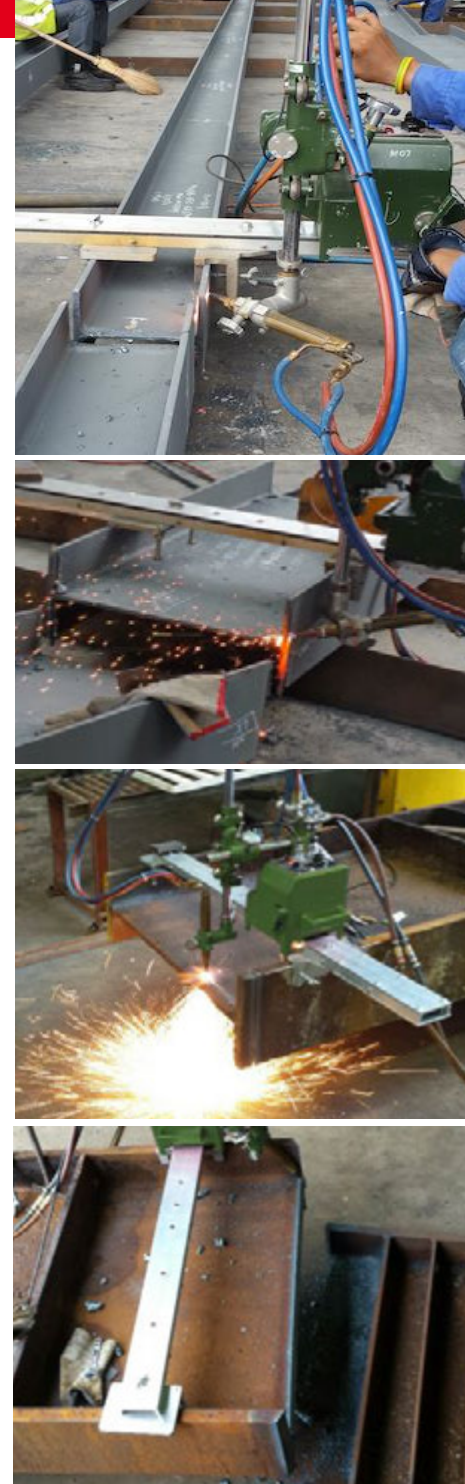
	Mini-Mantis II ST Set
Cutting thickness	5 -30 mm
Cutting speed	100 - 700 mm
Bevel angle	0 ~ 35°
Speed control	Dial operation
Driving method	Web: Friction roller Flange: Rack and Pinion
Input power	AC 110V
Dimension (incl. vertical unit)	L350 x W350 x H880 mm
Weight	15 kg

Types

Model	Stock #
Mini-Mantis II ST 110V Set	90131

Scope of delivery

Scope of delivery
Machine body
ST-400 Vertical unit with torch unit
Power cable
Standard tool set
Operation manual





Koike Europe B.V.

Grote Tocht 19
1507 CG Zaandam
The Netherlands

Tel +31-(0)75 - 612 - 7227
Fax +31-(0)75 - 670 - 2271
info@koike-europe.com
www.koike-europe.com



Artin Bonyan Co.

No.2, Jolfa Str, Tehran, Iran (IR)
Phone: + 98 21 22891307
Fax: + 98 21 22891297
Web: www.artinbonyan.com
E-mail: info@artinbonyan.com