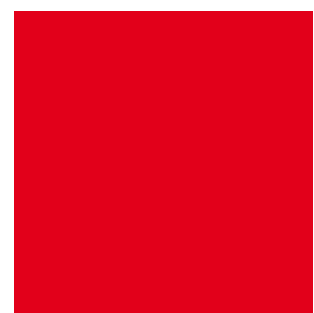
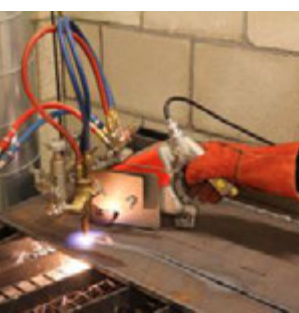
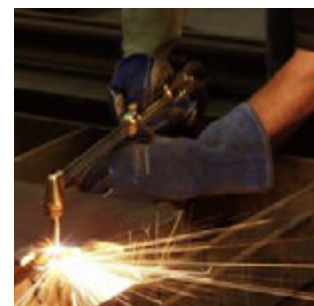
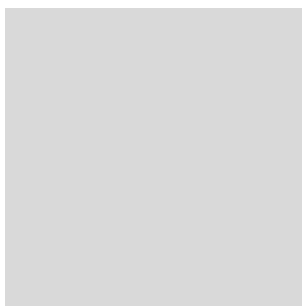
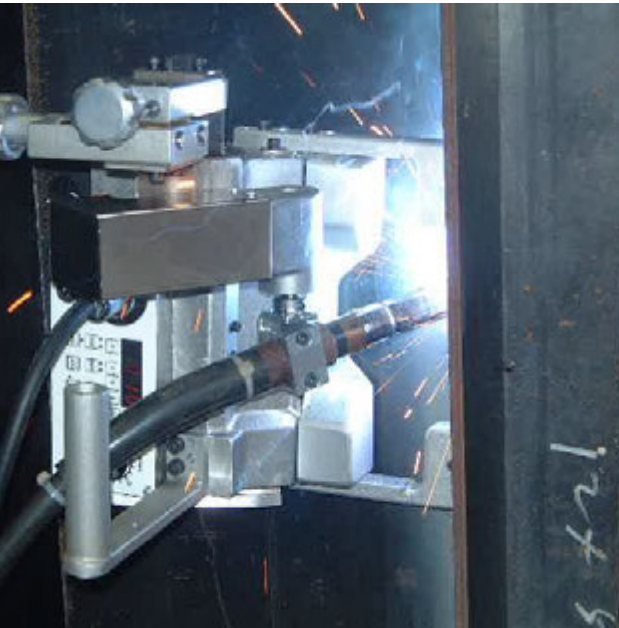
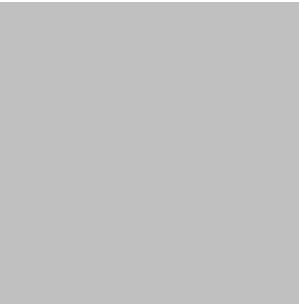


Portable Machines and Gas Equipment Product Catalogue





KOIKE – the spirit of cutting.

Established in 1918 in Japan,
customers active in shipbuilding, steel construction, vehicle manufacturing, fabrication
and other heavy metal industries trust on nearly 100 years of KOIKE's cutting expertise.

Advanced technology combined with face to face relationship and an in-depth
understanding of customers cutting needs - that's what KOIKE as a Japanese manufacturer
of oxy-fuel, plasma and laser cutting technology stands for.

Table of Contents

Portable Cutting Machine

Handy Auto / Handy Auto Plus	4
IK-12 Beetle	6
IK-93T Hawk	8
IK-93T Edge-Cut	10
IK-12 Max3	12
IK-72T	18
Picle-1-II	22
Auto Picle - S	24
Auto Picle Plasma	26
KHC-600D	28
Mini-Mantis II	30
IK-82 Series	32
Cir-Cut II	34
IK-70 Model 1000	36

Portable CNC Cutting Machine

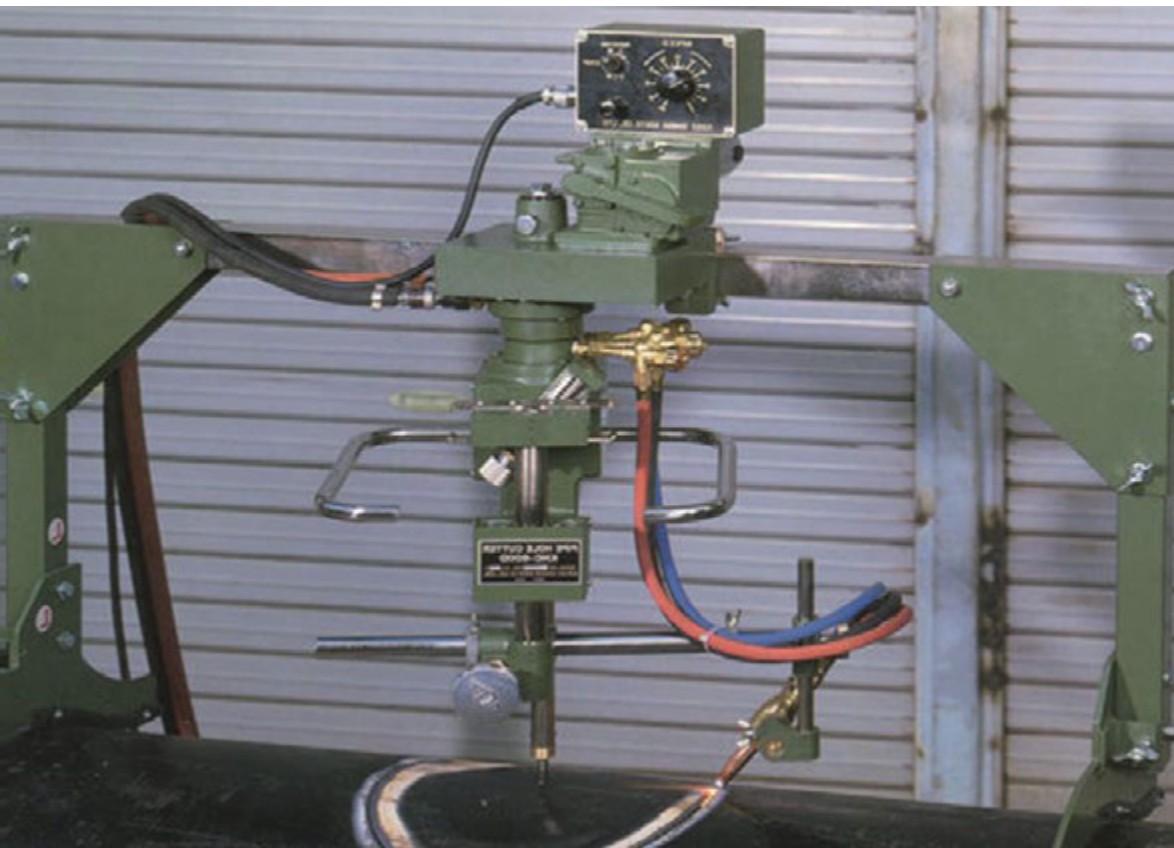
PNC-12 Extreme	38
----------------------	----

Portable Welding Machine

WEL-HANDY MINI STRONG	44
WEL-HANDY MULTI II Series	48
IK-2W Series	54

Gas Equipment

Apollo Global Coupling	58
Hand Torches	62
Cutting Nozzles	66
Oxy-fuel Cutting Accessories	72



KHC-600D

Pipe Hole Cutting Machine

Features and Benefits

- **Automatic oxy-fuel pipe cutter**
Automatically bevel cuts or straight cuts holes into pipe
- **Infinite rotational gas manifold**
Tangle-free gas manifold eliminates tension to the torch during cutting, ensuring accurate, sharp & clean cuts.
- **H-lever handle**
Torch height is automatically maintained to work distance based on trigonometry function of H-lever; very easy setup with just two adjustments
- **On/Off drive clutch**
- **Flat plate circle cutting**
Can be used for circle cutting on flat plate

KHC-600D is ideally suited for cutting high precision T-joint circles including any hole that crosses the side of the pipe for piping systems, high pressure vessels and heat exchangers. Developed with Koike Advanced Technology, the **KHC-600D** is a compact design that is light weight and easy to operate.

In addition to cutting circles and bevel in flat plate, the machine can cut a vessel from the inside or outside.



T-Joint pipe hole cutting

High quality cuts with easy operation

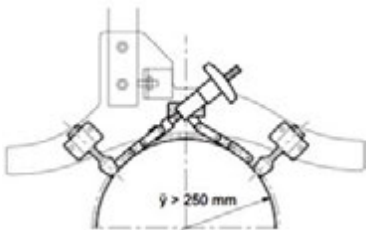
The **KHC-600D** increases quality and productivity of T-joint pipe hole cutting. Cutting nozzle to work distance is automatically maintained mechanically without cutting nozzle touching the plate. Very easy to setup with just two adjustments.

Also, rotating gas manifold with slip coupling is used on the main gas connection, keeping hoses from becoming tangled during operation.

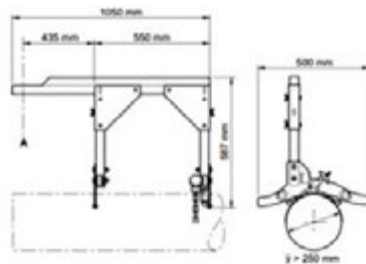
Accessories

Optional accessories

Accessory	Stock #	Description
Small diameter pipe fixture	90123	Fixture to small diameter pipes
Overhang cutting fixture	90125	Enables hole cutting near the end of pipe
Transformer AC230V - 42V	222.002.207	For 42V models
Transformer AC230V - 110V	90100	For 110V models



Small diameter pipe fixture



Overhang cutting fixture



Type and Specification

Specification

	KHC-600D
Cutting thickness	5 -50 mm
Torch rotation speed	0.12 ~ 1.2 rpm
Cutting diameter	Ø 80 ~ 600 mm
Torch up/down stroke	0 ~ 100 mm
Torch revolving radius	r 40 ~ 300 mm
Bevel angle	0 ~ 45°
Speed control	Control with dial operation
Pipe ratio branch : main	1:2 and above
Input power	AC 115V / AC 42V
Dimension	L1050 x W500 x H760 mm
Weight	26 kg (incl. support leg)

Types

Model	Stock #
KHC-600D 42V	90122
KHC-600D 110V	90121

Scope of delivery

Scope of delivery
Machine body including support leg
Cutting nozzles (102HC or 106HC, size #0, 1, 2)
Power cable
Standard tool set
Operation manual



Koike Europe B.V.

Grote Tocht 19
1507 CG Zaandam
The Netherlands

Tel +31-(0)75 - 612 - 7227
Fax +31-(0)75 - 670 - 2271
info@koike-europe.com
www.koike-europe.com



Artin Bonyan Co.

No.2, Jolfa Str, Tehran, Iran (IR)
Phone: + 98 21 22891307
Fax: + 98 21 22891297
Web: www.artinbonyan.com
E-mail: info@artinbonyan.com