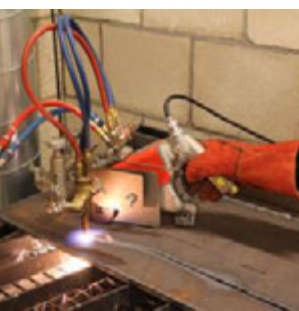
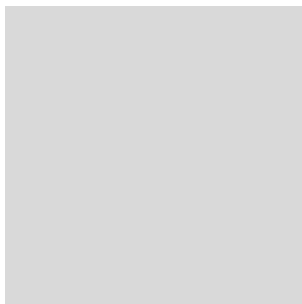
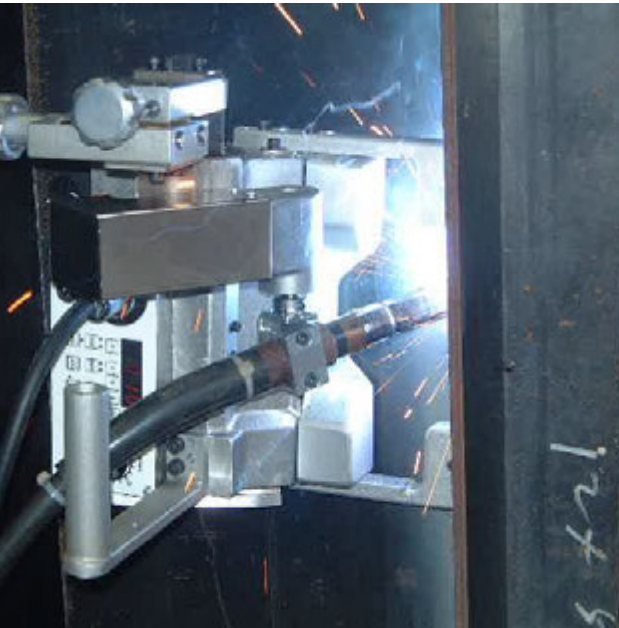
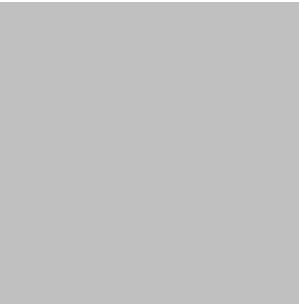


Portable Machines and Gas Equipment Product Catalogue





KOIKE – the spirit of cutting.

Established in 1918 in Japan,
customers active in shipbuilding, steel construction, vehicle manufacturing, fabrication
and other heavy metal industries trust on nearly 100 years of KOIKE's cutting expertise.

Advanced technology combined with face to face relationship and an in-depth
understanding of customers cutting needs - that's what KOIKE as a Japanese manufacturer
of oxy-fuel, plasma and laser cutting technology stands for.

Table of Contents

Portable Cutting Machine

| | |
|---|----------|
| Handy Auto / Handy Auto Plus | 4 |
| IK-12 Beetle | 6 |
| IK-93T Hawk | 8 |
| IK-93T Edge-Cut | 10 |
| IK-12 Max3 | 12 |
| IK-72T | 18 |
| Picle-1-II | 22 |
| Auto Picle - S | 24 |
| Auto Picle Plasma | 26 |
| KHC-600D | 28 |
| Mini-Mantis II | 30 |
| IK-82 Series | 32 |
| Cir-Cut II | 34 |
| IK-70 Model 1000 | 36 |

Portable CNC Cutting Machine

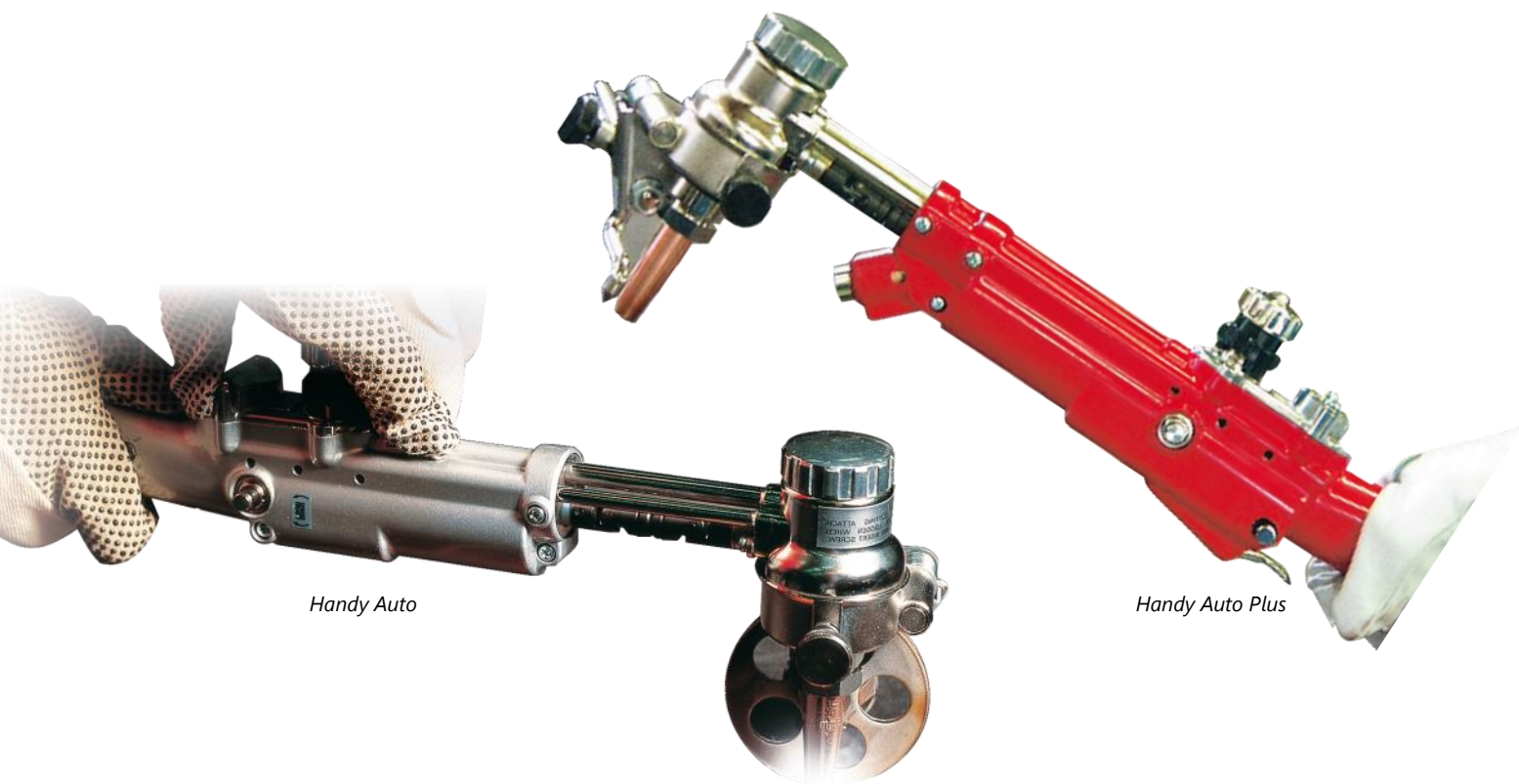
| | |
|----------------------|----|
| PNC-12 Extreme | 38 |
|----------------------|----|

Portable Welding Machine

| | |
|---------------------------------|----|
| WEL-HANDY MINI STRONG | 44 |
| WEL-HANDY MULTI II Series | 48 |
| IK-2W Series | 54 |

Gas Equipment

| | |
|------------------------------------|----|
| Apollo Global Coupling | 58 |
| Hand Torches | 62 |
| Cutting Nozzles | 66 |
| Oxy-fuel Cutting Accessories | 72 |



Handy Auto

Handy Auto Plus

HANDY AUTO Series

Portable Motorized Hand Torch

Features and Benefits

- **Motorized oxy fuel hand torch**
High quality cuts in both every positions, on horizontal plate, pipe, or on vertical surfaces.
- **All position drives**
Allows cutting in any position from any direction
- **Quick change attachments**
Single hand changeover
- **Light weight**
Easily operated like a hand torch
2.7 kg (Handy Auto)
3.5 kg (Handy Auto Plus)
- **Auto ignition** (Handy Auto Plus)
- **One click gas shutoff** (Handy Auto Plus)
- **Flame pre-set valves** (Handy Auto Plus)



Two models

Handy Auto

- Machine-line cutting results with hand torch handling
- Modular attachment system
- Tool-free attachment replacement
- Set of basic attachments included*

* Every KIT comes with a basic set of attachments to cut straight, bevel, and small circle.



Handy Auto Plus

Handy Auto with additional features

- Auto ignition
- One-click gas shutoff
- Flame pre-set valves
- Set of basic attachments included.



Optional accessories

| Accessory | Stock # | Description |
|-----------------------------------|--------------|--|
| Large circle cutting attachment | 30106 | Cutting diameter 120~500 mm |
| Straight guide rail 500 mm | 30104 | Straight cutting guide rail |
| Battery pack | 225.401.101A | |
| Large circle extension bar 530 mm | 30132 | Use with Large circle cutting attachment to increase cutting diameter to 1000 mm |



Straight guide rail 500 mm



Large circle attachment

Type and Specification

Specification

| | Handy Auto KIT | Handy Auto Plus KIT |
|--|--------------------|---------------------|
| Cutting thickness | 5 ~ 30 mm | |
| Cutting speed | 150 ~ 530 mm/min | |
| Speed control method | Transistor control | |
| Drive system | Friction drive | |
| Power source | AC 100 - 240V | |
| Input power | DC 12V | |
| Bevel wheel assembly bevel angle | 22 ~ 45° | |
| Small circle attachment cutting diameter | Ø 30 ~ 120 mm | |
| Machine length | 500 mm | 525 mm |
| Weight | 2.7 kg | 3.5 kg |
| Auto ignition function | - | ● |
| Pre-set valves | - | ● |
| Flame shut-off function | - | ● |

● : possible

Types

| Model | Stock # |
|---------------------|---------|
| Handy Auto KIT | 90005 |
| Handy Auto Plus KIT | 90001 |

Scope of delivery

| | Handy Auto KIT | Handy Auto Plus KIT |
|-------------------|--------------------------|---------------------|
| Scope of delivery | Machine body | |
| | Small circle attachment | |
| | Standard wheel assembly | |
| | Bevelling wheel assembly | |
| | Auxiliary wheel assembly | |
| | Guide lever | |
| | AC adaptor with cable | |
| | Cutting nozzles | |
| | Standard tool set | |
| | Steel carrying case | |



Koike Europe B.V.

Grote Tocht 19
1507 CG Zaandam
The Netherlands

Tel +31-(0)75 - 612 - 7227
Fax +31-(0)75 - 670 - 2271
info@koike-europe.com
www.koike-europe.com



Artin Bonyan Co.

No.2, Jolfa Str, Tehran, Iran (IR)
Phone: + 98 21 22891307
Fax: + 98 21 22891297
Web: www.artinbonyan.com
E-mail: info@artinbonyan.com